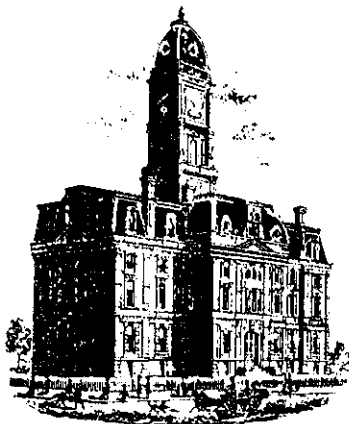


Drain: BLISS JOHNSON **Drain #:** 52
Improvement/Arm: CONCRETE CROSSING - COTTAGE GROVE PHASE I ARM
Operator: J. LIVINGSTON **Date:** 2-3-04
Drain Classification: Urban/Rural **Year Installed:** 2003

GIS Drain Input Checklist

- Pull Source Documents for Scanning JL
- Digitize & Attribute Tile Drains _____
- Digitize & Attribute Storm Drains _____
- Digitize & Attribute SSD _____
- Digitize & Attribute Open Ditch _____
- Stamp Plans _____
- Sum drain lengths & Validate _____
- Enter Improvements into Posse JL / JL
- Enter Drain Age into Posse _____
- Sum drain length for Watershed in Posse _____
- Check Database entries for errors _____



SURVEYOR'S OFFICE

Hamilton County

Kenton C. Ward, Surveyor

Phone (317) 776-8495

Fax (317) 776-9628

Suite 188

*One Hamilton County Square
Noblesville, Indiana 46060-2230*

February 20, 2003

To: Hamilton County Drainage Board

Re: Bliss Johnson Drain, Conner Crossing, Cottage Grove Phase I Arm

Attached is a petition, non-enforcement request, plans, calculations, quantity summary and assessment roll for the Conner Crossing, Cottage Grove Phase I Arm, Bliss Johnson Drain. I have reviewed the submittals and petition and have found each to be in proper form.

I have made a personal inspection of the land described in the petition. Upon doing so, I believe that the drain is practicable; will improve the public health; benefit a public highway and be of public utility; and that the costs, damages, and expenses of the proposed drain will probably be less than the benefits accruing to the owners of land likely to be benefited. The drain will consist of the following:

48" RCP 789 ft Open Ditch 160 ft

The total length of the drain will be 949 feet.

The open ditch listed above is that portion of the retention area in Common Area "J" between Str. 780 and Str. 695. The portions of storm sewer to be part of the drain are those between structures 693 to 694; 694 to 695; 780 to 781; 781 to 782; and 782 to 783.

The retention pond (lake) located in Common Area "J" is not to be considered part of the regulated drain. Only the inlet and outlet will be maintained as part of the regulated drain. The maintenance of the pond (lake) will be the responsibility of the Homeowners Association. The Board will however, retain jurisdiction for ensuring the storage volume for which the lake was designed will be retained. Thereby, allowing no fill or easement encroachments.

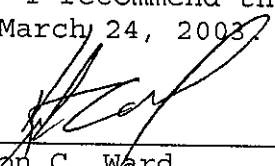
I have reviewed the plans and believe the drain will benefit each lot equally. Therefore, I recommend each lot be assessed equally. I also believe that no damages will result to landowners by the construction of this drain. I recommend a maintenance assessment of \$35.00 per lot, \$10.00 per acre for roadways, with Common Areas set at \$5.00 per acre with a \$35.00 minimum. With this assessment the total annual assessment for this drain/this section will be \$1,994.50.

Parcels assessed for this drain may be assessed for the Sly Run Drain at sometime in the future.

I believe this proposed drain meets the requirements for Urban Drain Classification as set out in IC 36-9-27-67 to 69. Therefore, this drain shall be designated as an Urban Drain.

I recommend that upon approval of the above-proposed drain that the Board also approve the attached non-enforcement request. This request is for the reduction of the regulated drain easement to those easement widths as shown on the secondary plat Conner Crossing, Cottage Grove Phase I as recorded in the office of the Hamilton County Recorder.

I recommend the Board set a hearing for this proposed drain for March 24, 2003.



Kenton C. Ward
Hamilton County Surveyor

KCW/11m

HAMILTON COUNTY DRAINAGE BOARD
NOBLESVILLE, INDIANA

IN RE: Conner Crossing of Noblesville: Cottage)
Grove Phase One)
Hamilton County, Indiana)


PETITION FOR RELOCATION RECONSTRUCTION

Primrose Development LLC (hereinafter "Petitioner"),

Hereby petitions the Hamilton County Drainage Board for authority to relocate and improve a section of the Bliss Johnson Drain, and in support of said petition advises the Board that:

1. Petitioner owns real estate through which a portion of the Bliss Johnson Drain runs.
2. Petitioner plans to develop its real estate with ponds, building, utilities, storm drains, sanitary sewers and other structures.
3. Petitioner's proposed development of its real estate will require relocation and reconstruction of a portion of the Bliss Johnson Drain, as specifically shown on engineering plans and specifications filed with the Hamilton County Surveyor.
4. The work necessary for the proposed relocation and reconstruction will be undertaken at the sole expense of the Petitioner and such work will result in substantial improvement to the Bliss Johnson Drain, without cost to other property owners on the watershed of the Bliss Johnson Drain.
5. Proposed relocation and reconstruction will not adversely affect other land owners within the drainage shed.
6. Petitioner requests approval of the proposed relocation and reconstruction under IC36-9-27-52.5.

WHEREFORE, Petitioner requests that an Order issued from the Hamilton County Drainage Board authorizing relocation and reconstruction of the Bliss Johnson Drain, in conformance with applicable law and plans and specifications on file with the Hamilton County Surveyor.


Signed _____
James White - General Manager
Printed _____

ENGINEERS ESTIMATE

PROJECT: Corner Crossing of Noblesville
DATE: September 16, 2002
Reconstruction of the Bliss Johnson Legal Drain
LOCATION: Hamilton County **ITEM:** SUMMARY **JOB #:** 3659-001

DESCRIPTION	QUANTITY	UNIT	UNIT PRICE	TOTAL
Brookston Phase One				
STORM				\$118,779.10
EROSION CONTROL				\$2,178.00
Cottage Grove Phase One				
STORM				\$76,182.70
EROSION CONTROL				\$1,072.50
Phase One Entry				
STORM				\$91,696.00
EROSION CONTROL				\$1,712.70
T O T A L				\$291,621.00

I certify that this estimate was prepared under my supervision and that it represents an estimate of costs for materials and labor to make the improvements shown on the construction plans and is based on standard methods of estimating such costs effective at the time the estimate was prepared.

By: Brandon T. Burke 11-7-02
 Brandon T. Burke, P.E.
 The Schneider Corporation
 12821 E. New Market Street, Suite 100
 Carmel, IN 46033



||::

FINDINGS AND ORDER

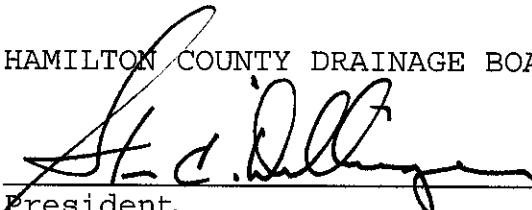
CONCERNING THE MAINTENANCE OF THE

Bliss Johnson Drain, Conner Crossing, Cottage Grove Section 1

On this **24th day of March 2003**, the Hamilton County Drainage Board has held a hearing on the Maintenance Report and Schedule of Assessments of the **Bliss Johnson Drain, Conner Crossing, Cottage Grove Section 1**.

Evidence has been heard. Objections were presented and considered. The Board then adopted the original/amended Schedule of Assessments. The Board now finds that the annual maintenance assessment will be less than the benefits to the landowners and issues this order declaring that this Maintenance Fund be established.


HAMILTON COUNTY DRAINAGE BOARD



President



Member



Member

Attest: 

CERTIFICATE OF COMPLETION AND COMPLIANCE

TO: HAMILTON COUNTY SURVEYOR
RE: Conner Crossing of Noblesville – Cottage Grove Phase One Legal Drain

I hereby certify that:

1. I am a Register Engineer in the State of Indiana
2. I am familiar with the plans and specifications for the above referenced subdivision.
3. I have personally observed and supervised the completion of the Drainage Facilities for the above referenced subdivision, and
4. To the best of my knowledge, information and belief, the Drainage Facilities within the subdivision has been installed and completed in conformity with all plans and specifications.

Signature:  Date: 7-28-04

Type or print name: Brandon T Burke, P.E.

Business /Address: The Schneider Corporation

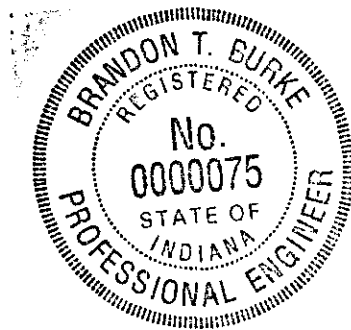
12821 E. New Market Street, Suite 100, Carmel, IN 46032

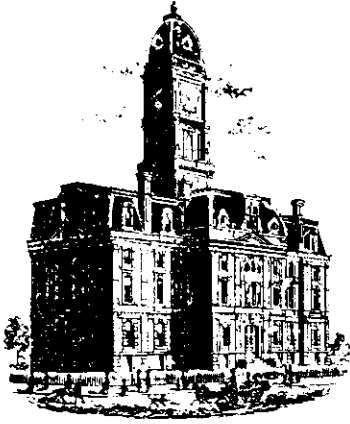
Telephone: (317) 569-8112

INDIANA REGISTRATION NUMBER

PE 1000075

SEAL





SURVEYOR'S OFFICE

Hamilton County

Kenton C. Ward, Surveyor
 Phone (317) 776-8495
 Fax (317) 776-9628

Suite 188
 One Hamilton County Square
 Noblesville, Indiana 46060-2230

To: Hamilton County Drainage Board

June 2, 2006

Re: Bliss Johnson Drain: Cottage Grove Phase I Relocation

Attached are as-builts, certificate of completion & compliance, and other information for Cottage Grove Phase I Relocation. An inspection of the drainage facilities for this section has been made and the facilities were found to be complete and acceptable.

During construction, changes were made to the drain, which will alter the plans submitted with my report for this drain-dated February 20, 2003. The report was approved by the Board at the hearing held March 24, 2003. (See Drainage Board Minutes Book 7, Pages 17-18)
 The changes are as follows:

Structure:	Length:	Size	Material:	Up Invert:	Dn Invert	Grade:	Changes(ft):
695-694	49	48	ROUND	827.1	826.99	0.22	4
694-693	135	48	ROUND	826.99	826.84	0.11	2
783-782	152	48	ROUND	829.09	828.14	0.63	2
782-781	193	48	ROUND	828.14	827.72	0.22	2
781-780	262	48	ROUND	827.72	827.19	0.2	-8
*693-692	121	48	ROUND	826.84	826.53	0.26	121
RCP Pipe Totals:						Other Drain:	
	48	912				Open	160
Total:		<u>912</u>				Total:	<u>160</u>

*Note: Not listed on original surveyor's report. Asbuilt information can be found on the Brookstone Phase I asbuilts by Schneider #3659.004. The length of the drain due to the changes described above is now **1072 feet**.

The non-enforcement was approved by the Board at its meeting on March 24, 2003 and recorded under instrument #200400083084.

The following sureties were guaranteed by Bond Safeguard Insurance Company and released by the Board on its November 8, 2004 meeting and September 26, 2005 meeting.

Bond-LC No: 5006806
Insured For: Reconstruction
Amount: \$291,621.00

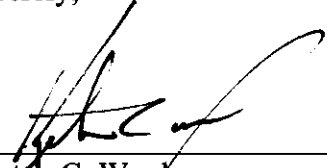
Bond-LC No: 5012784
Insured For: Drains & outfall str.
Amount: \$25,551.00

Issue Date: November 21, 2003

Issue Date: October 8, 2004

I recommend the Board approve the drain's construction as complete and acceptable.

Sincerely,

A handwritten signature in black ink, appearing to read 'K. C. Ward', written over a horizontal line.

Kenton C. Ward,
Hamilton County Surveyor

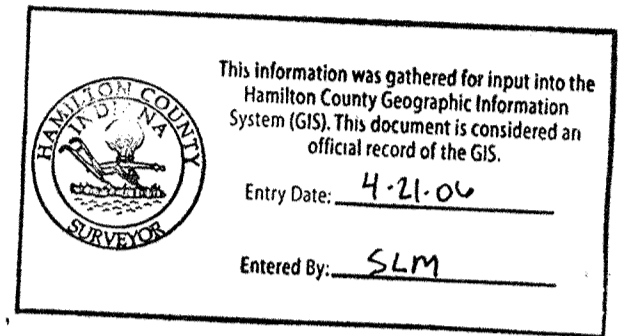
KCW/slm

SEC. 28 & 33-T19N-R4E

CONNER CROSSING OF NOBLESVILLE

COTTAGE GROVE PHASE ONE

(CONSTRUCTION PLANS)
HAMILTON COUNTY
NOBLESVILLE, INDIANA



DEVELOPER: PRIMROSE DEVELOPMENT, L.L.C.
ZONING: R1/PD

1016 3RD. AVENUE, SW SUITE 100
 CARMEL, INDIANA 46032
 (317) 846-6641
 CONTACT: JIM WHITE

NOTE:
 ANY TYPE "A" STORM STRUCTURE IN WHICH INCOMING OR OUTGOING PIPES ARE NOT PERPENDICULAR TO THE STRUCTURE SHALL BE INCREASED IN SIZE SO THAT THE CORNERS OF STRUCTURE ARE LEFT INTACT

STORM STRUCTURE TABLE

Structure#	Structure Type	Neenah Casting Type	East Jordan Casting Type
643	Storm Manhole Type H	R-4342	6489
644	Storm Manhole Type H	R-4342	6489
644A	Storm Manhole Type H	R-1772-C	1022-2
645	Storm Manhole Type H	R-1772-C	1022-2
645	Storm Manhole Type C	R-4342	6489
646	Storm Manhole Type C	R-1772-C	1022-2
647	Storm Manhole Type C	R-4342	6489
648	Storm Manhole Type C	R-1772-C	1022-2
649	Storm Manhole Type C	R-1772-C	1022-2
650	Storm Manhole Type C	R-1772-C	1022-2
651	Catch Basin Type A	R-4342	6489
652	Inlet Type A	R-4342	6489
657	Catch Basin Type A	R-3501-TL	7495M2
658	Inlet Type A	R-3501-TR	7495M1
660	Catch Basin Type A	R-3501-TL	7495M2
661	Inlet Type A	R-3501-TR	7495M1
665	Catch Basin Type A	R-3501-TL	7495M2
666	Inlet Type A	R-3501-TR	7495M1
670	Catch Basin Type A	R-3501-TR	7495M1
671	Inlet Type A	R-3501-TL	7495M2
672	Catch Basin Type A	R-3501-TL	7495M2
673	Inlet Type A	R-3501-TR	7495M1
674	Catch Basin Type A	R-3501-TL	7495M2
675	Inlet Type A	R-3501-TR	7495M1
676	Catch Basin Type A	R-3501-TL	7495M2
677	Inlet Type A	R-3501-TR	7495M1
694	Storm Manhole Type K	R-1772-C	1022-2
695	Concrete End Section	N.A.	N.A.
750	Concrete End Section	N.A.	N.A.
751	Storm Manhole Type C	R-4342	6489
752	Storm Manhole Type C	R-1772-C	1022-2
753	Storm Manhole Type C	R-1772-C	1022-2
754	Storm Manhole Type C	R-1772-C	1022-2
755	Storm Manhole Type C	R-1772-C	1022-2
756	Storm Manhole Type C	R-1772-C	1022-2
757	Inlet Type A	R-4342	6489
758	Catch Basin Type A	R-3501-TL	7495M2
759	Inlet Type A	R-3501-TR	7495M1

INDEX

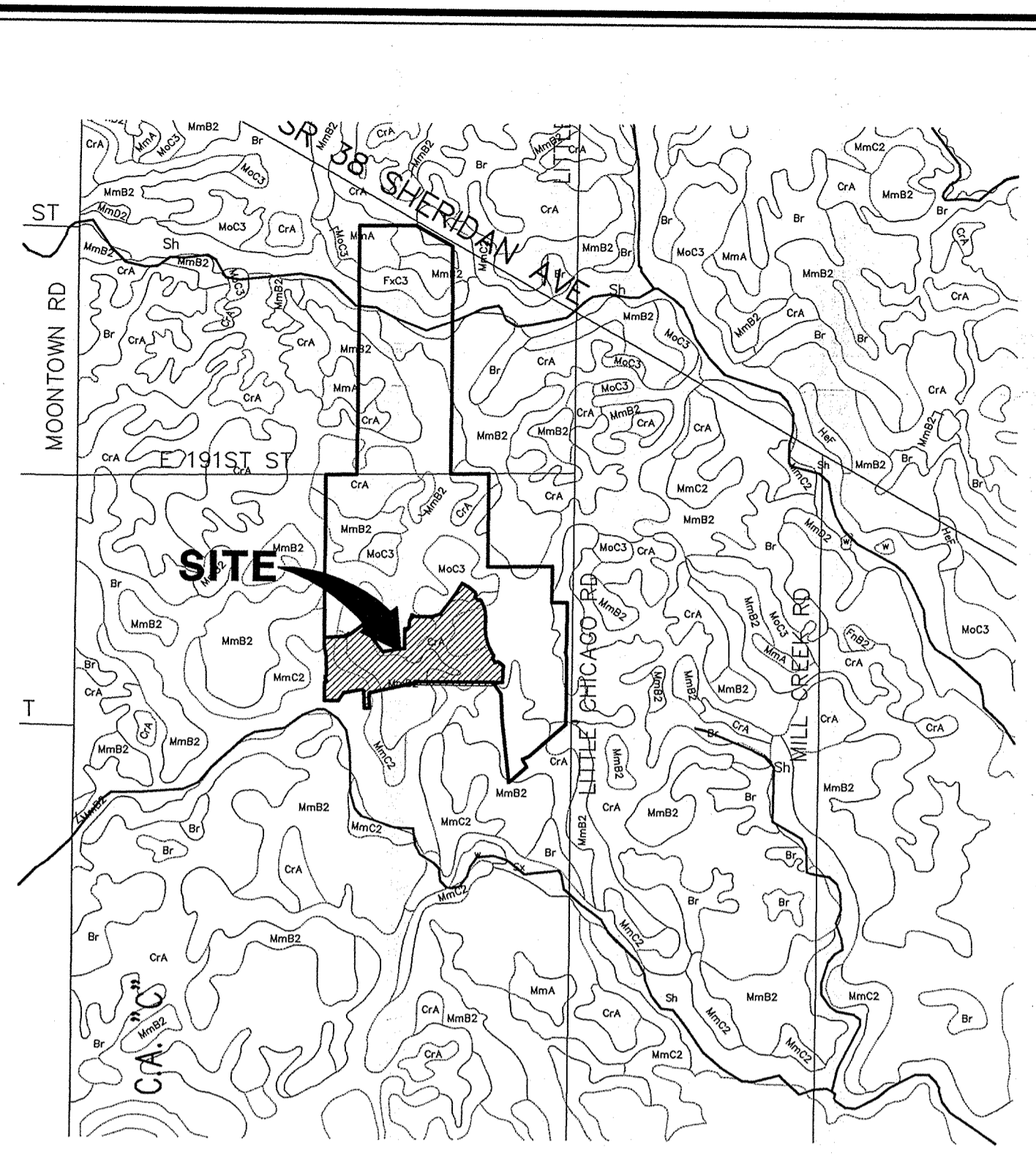
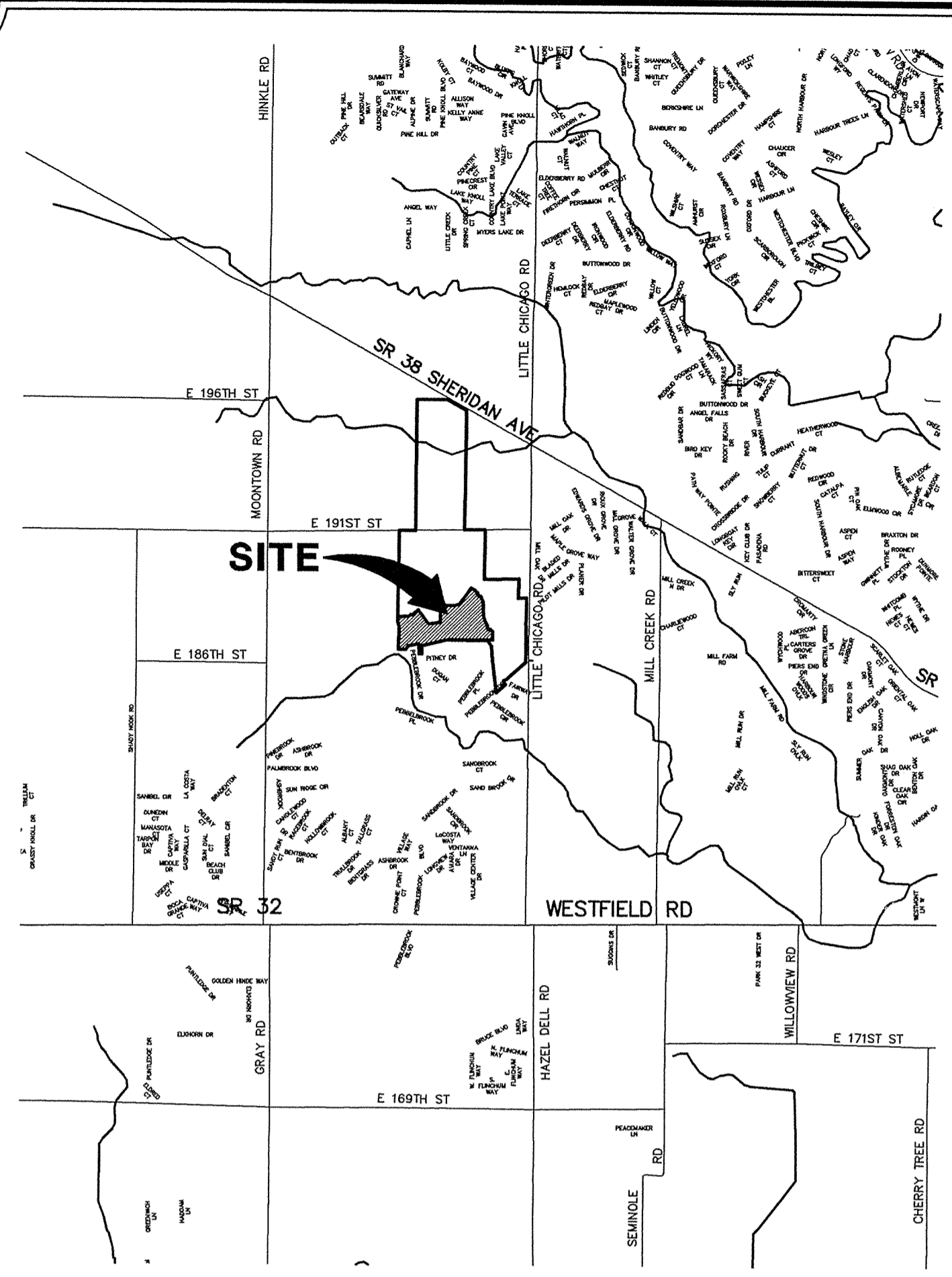
SHEET No.	DESCRIPTION
C100	COVER SHEET
C101-C102	DEVELOPMENT PLAN
C103-C104	EROSION CONTROL PLAN
C201-C204	STREET PLAN AND PROFILE
C301	INTERSECTION DETAILS
C302-C303	TRAFFIC CONTROL AND SIGNAGE PLAN
C401-C404	SANITARY SEWER PLAN & PROFILE
C601-C606	STORM SEWER PLAN & PROFILE
C701-C702	WATER DISTRIBUTION PLAN
C801-C811	NOBLESVILLE DETAILS
C812	GENERAL DETAILS
C813	EROSION CONTROL DETAILS

SANITARY STRUCTURE TABLE

Structure#	Structure Type	Neenah Casting Type	East Jordan Casting Type
401	Sanitary Manhole Type A	R-1772-C	1022-2
440	Sanitary Manhole Type A	R-1772-C	1022-2
441	Sanitary Manhole Type A	R-1772-C	1022-2
442	Sanitary Manhole Type A	R-1772-C	1022-2
443	Sanitary Manhole Type A	R-1772-C	1022-2
444	Sanitary Manhole Type A	R-1772-C	1022-2
445	Sanitary Manhole Type A	R-1772-C	1022-2
446	Sanitary Manhole Type A	R-1772-C	1022-2
447	Sanitary Manhole Type A	R-1772-C	1022-2
450	Sanitary Manhole Type A	R-1772-C	1022-2
451	Sanitary Manhole Type A	R-1772-C	1022-2
470	Sanitary Manhole Type A	R-1772-C	1022-2
471	Sanitary Manhole Type A	R-1772-C	1022-2
472	Sanitary Manhole Type A	R-1772-C	1022-2
473	Sanitary Manhole Type A	R-1772-C	1022-2
474	Sanitary Manhole Type A	R-1772-C	1022-2

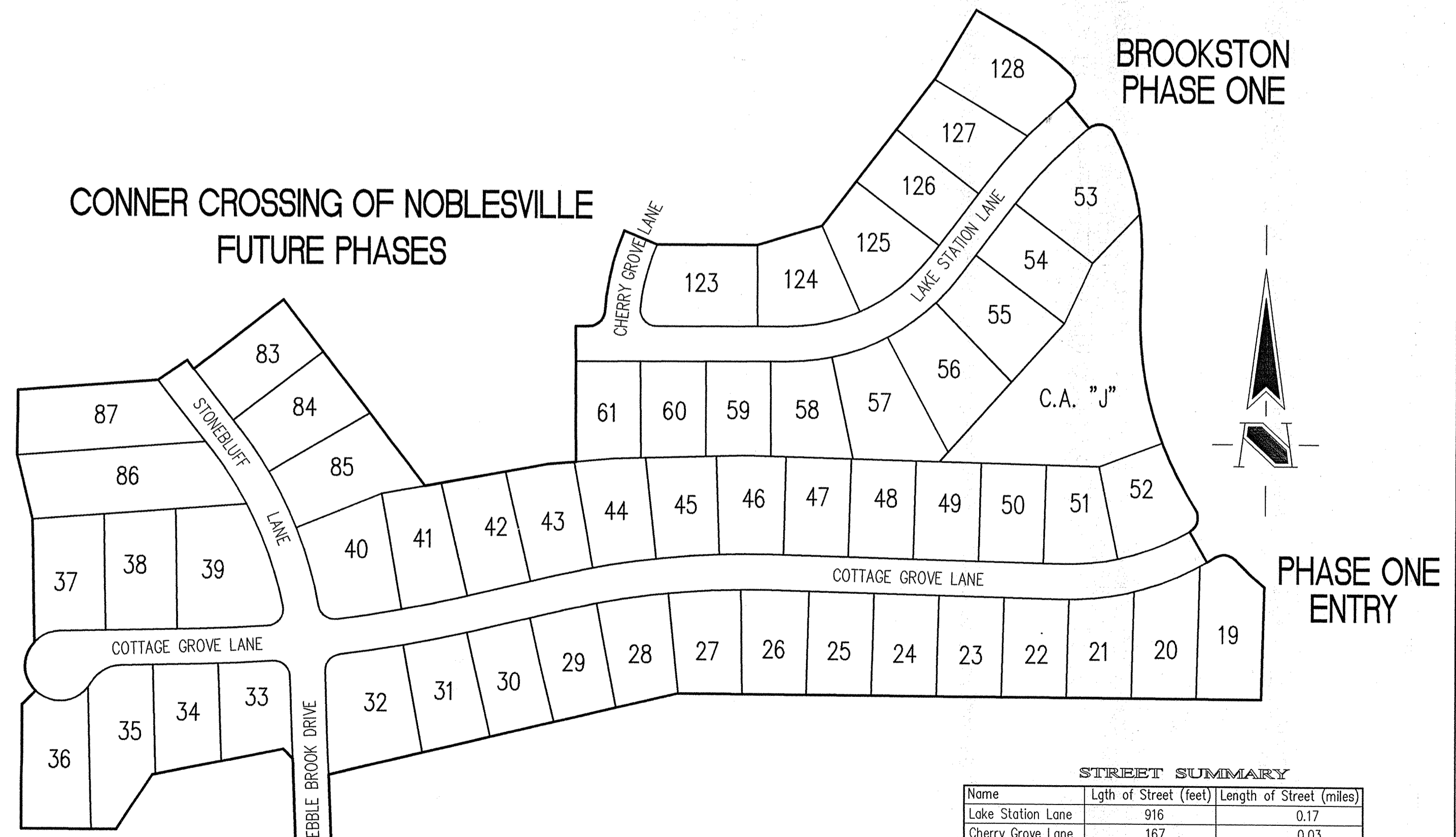
STORM STRUCTURE TABLE

Structure#	Structure Type	Neenah Casting Type	East Jordan Casting Type
766	Catch Basin Type A	R-4342	6489
767	Inlet Type A	R-4342	6489
768	Catch Basin Type A	R-3501-TR	7495M1
769	Inlet Type A	R-3501-TL	7495M2
770	Catch Basin Type A	R-3501-TL	7495M2
771	Inlet Type A	R-3501-TR	7495M1
775	Catch Basin Type A	R-4342	6489
780	Concrete End Section	N.A.	N.A.
781	Storm Manhole Type K	R-1772-C	1022-2
782	Storm Manhole Type K	R-1772-C	1022-2
783	Storm Manhole Type K	R-4342	6489
786	Catch Basin Type A	R-3501-TL	7495M2
787	Inlet Type A	R-3501-TR	7495M1
788	Catch Basin Type A	R-3501-TL	7495M2
789	Inlet Type A	R-3501-TR	7495M1
791	Inlet Type A	R-4342	6489
788	Catch Basin Type A	R-3501-TL	7495M2
789	Inlet Type A	R-3501-TR	7495M1



SOILS MAP
 NOT TO SCALE

SUB-SURFACE DRAINAGE
SANITARY SEWER
STORM SEWER
WATERMAIN
RECORD DRAWING



STREET SUMMARY

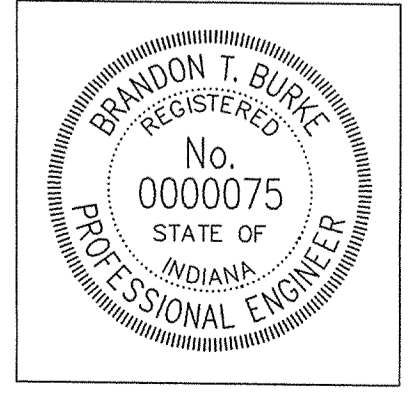
Name	Lgth of Street (feet)	Length of Street (miles)
Lake Station Lane	916	0.17
Cherry Grove Lane	167	0.03
Stoneruff Lane	469	0.09
Pebble Brook Drive	369	0.07
Cottage Grove Lane	1769	0.34
Total	3690	0.70

12821 E. New Market Street
 Suite 100
 Carmel, IN 46032
 Telephone: 317.569.8112
 Fax: 317.826.6410
 www.schneidercorp.com

Architecture
 Civil Engineering
 Environmental Engineering
 Geotechnical Services
 GIS * LIS
 Home Builder Services
 Interior Design
 Land Surveying
 Landscape Architecture
 Transportation Engineering

CERTIFIED BY: BRANDON T. BURKE
 E-MAIL ADDRESS: bburke@schneidercorp.com

THESE DOCUMENTS ARE SUBJECT TO PERIODIC REVISIONS BY THE SCHNEIDER CORPORATION. THE HOLDER IS RESPONSIBLE FOR VERIFYING THAT THESE DOCUMENTS ARE THE MOST CURRENT PRIOR TO USE.



REVISIONS

DATE	BY	DESCRIPTION
08/09/02	BET	C101-C104, C201-C204, C301-C303, C601-C606
09/03/02	BET	C101-102, C202, C402-C403, C602-C603, C700-C701
08/04/03	BET	C100-C104 & C601-C606
7/26/04	BET	"RECORD DRAWING"

PROJECT ENGINEER: _____
 CHECKED BY: _____ DATE CHECKED: _____

This copy is from the Digital Archive of the Hamilton County Surveyor's Office; Noblesville, In 46060

GENERAL NOTES

- ALL GRADES AT BOUNDARY SHALL MEET EXISTING GRADES.
- IT SHALL BE THE RESPONSIBILITY OF EACH CONTRACTOR TO VERIFY ALL EXISTING UTILITIES AND CONDITIONS PERTAINING TO HIS PHASE OF WORK. IT SHALL ALSO BE THE CONTRACTOR'S RESPONSIBILITY TO CONTACT THE OWNERS OF THE VARIOUS UTILITIES FOR PROPER STAKE LOCATIONS FOR EACH UTILITY BEFORE WORK IS STARTED. THE CONTRACTOR SHALL NOTIFY IN WRITING THE OWNER OR THE ENGINEER OF ANY CHANGES, OMISSIONS, OR ERRORS FOUND ON THESE PLANS OR IN THE FIELD BEFORE WORK IS STARTED OR RESUMED.
- STANDARD SPECIFICATIONS FOR THE CITY OF NOBLESVILLE, INDIANA SHALL APPLY FOR ALL SANITARY SEWER AND STORM SEWERS.
- ANY PART OF THE SANITARY OR STORM SEWER TRENCHES RUNNING UNDER PAVED AREAS TO BE BACKFILLED WITH GRANULAR MATERIAL.
- THE SIZE AND LOCATION OF EXISTING UTILITIES SHOWN ARE PER INFORMATION PROVIDED BY THE RESPECTIVE UTILITY COMPANIES. ALL UTILITY COMPANIES SHOULD BE NOTIFIED PRIOR TO ANY EXCAVATION FOR FIELD LOCATION OF SERVICES.
- SERVICE WALKS SHALL BE NON-REINFORCED CONCRETE 4" THICK AND 4' IN WIDTH.
- 4" CONCRETE SERVICE WALK ACROSS FRONTAGE OF EACH LOT TO BE CONSTRUCTED BY OTHERS.
- EXPANSION JOINTS AREA TO BE PLACED AT ALL WALK INTERSECTIONS AND BETWEEN WALKS AND PLATFORMS. SIDEWALK SPACES ARE TO BE EQUALLY SPACED BETWEEN EXPANSION JOINTS, CONTRACTION JOINTS AND PERPENDICULAR TO SIDEWALKS AT 5' INTERVALS OR LESS WITH A CONTRACTION JOINT EVERY 20' OR LESS.
- TEMPORARY TRAFFIC CONTROL DURING CONSTRUCTION TO CONFORM TO APPLICABLE LOCAL AND STATE STANDARDS. ALL CONSTRUCTION ACTIVITY ON THIS SITE TO BE PERFORMED IN COMPLIANCE WITH APPLICABLE O.S.H.A. STANDARDS FOR WORKER SAFETY.
- CONTRACTOR SHALL MINIMIZE DAMAGE TO EXISTING TREES. REMOVE AND BACKFILL ALL AREAS WHERE ANY FIELD TILE OR RIGHT-OF-WAYS, ALL FIELD TILES INTERCEPTED TO BE PERPETUATED INTO STORM SEWER SYSTEM OR LAKE.
- THE SUBCONTRACTOR SHALL NOTIFY IN WRITING THE OWNER AND THE ENGINEER IN ANY CIRCUMSTANCES WHERE THIS CANNOT BE ACCOMPLISHED.
- ALL FILL AREAS SHALL BE COMPACTED TO AT LEAST 95 PERCENT OF THE MAXIMUM DRY DENSITY (ASTM D-1557). FILL UNDER THE FOOTING SHALL BE COMPACTED TO AT LEAST 95 PERCENT OF THE MAXIMUM DRY DENSITY (ASTM D-1557).
- DEVELOPER SHALL CONFORM TO MONUMENTATION STANDARDS OF THE CITY OF NOBLESVILLE AS GRAPHICALLY DEFINED OF THE SECONDARY PLAT AND SPECIFIED UNDER THE "MONUMENTATION GUIDELINES". SEE SHEET C808.

ASSUMED NORTH SCALE: 1"=50'

STRUCTURE DATA TABLE

STR. NO.	TYPE	INVERT IN.	INVERT OUT
780		827.11 (48" NW)	
781		836.30	827.65 (48" NE)
782		837.60	828.03 (46" SE)
783		838.10	828.33 (48" SW)
694		835.39	827.50 (48" NW)
695			827.10 (48" SE)

SUB-SURFACE DRAINAGE SANITARY SEWER STORM SEWER RECORD DRAWING

- LEGEND**
- Existing Storm Sewer
 - New Storm Sewer
 - Existing Sanitary Sewer
 - New Sanitary Sewer
 - Existing Contour
 - Existing Elevation
 - New Pavement Grade
 - All Other Finish Grades
 - Match Existing Grades
 - Corrected Grades
 - Storm Structure Number
 - Sanitary Structure Number
 - No Pad Construction
 - Denotes Approximate Pad Size and Minimum Pad Elevation
 - Flow Arrow
 - 6" Subsurface Drain Swale (S)
 - Existing Trees
 - Existing Gas Main
 - Existing Telephone
 - Existing Water Main
 - Existing Flowline
 - Existing Overhead Utilities
 - MFFE
 - Minimum Finished Floor Elevation
 - Emergency Overflow Route
 - Construction Fence-Tree Preservation Area

HOLEY MOLEY SAYS "DON'T DIG BLIND"

"IT'S THE LAW" CALL 2 WORKING DAYS BEFORE YOU DIG 1-800-382-5544

PER INDIANA STATE LAWS 69-1991 IT IS AGAINST THE LAW TO EXCAVATE WITHOUT NOTIFYING THE UNDERGROUND LOCATION SERVICE TWO (2) WORKING DAYS BEFORE COMMENCING WORK.

BENCHMARK

BM #1 - In Hamilton County, about 1.4 miles south of Westfield, 1.4 miles south along "old" U.S. Highway 31 from its intersection with State Road 32 in Westfield to an east-west cross road, at a 1.5 foot pipe headwall of the culvert, 23 feet north of the center line of the east-west road, at the east concrete center line of the north-south road, 501 feet north of the south face of the headwall, a chiseled triangle elevation = 845.033 (NAD 1929)

BM #2 - In Hamilton County, about 1.4 miles south of Westfield, 1.4 miles south along "old" U.S. Highway 31 from its intersection with State Road 32 in Westfield to an east-west cross road, thence 0.1 mile east to a concrete bridge over Cool Creek, set in the top of the west end of the north quadrant of the west face of the north guardrail, a Standard Indiana Flood Control and Water Resources Commission Elevation = 846.716

CAUTION-BURIED UTILITIES MAY EXIST ALONG GOLF COURSE FRONTAGE. NOTIFY ENGINEER OR DEVELOPER IF ENCOUNTERED IMMEDIATELY.

CAUTION-BURIED UTILITIES MAY EXIST ALONG GOLF COURSE FRONTAGE. NOTIFY ENGINEER OR DEVELOPER IF ENCOUNTERED IMMEDIATELY.

CONNER CROSSING OF NOBLESVILLE PHASE ONE ENTRY

NORMAL POOL=826.80

Hamilton County Registered Professional Engineer
No. 0000075
STATE OF INDIANA
Professional Engineer
Brandon T. Bunk
DATE: 4.21.04

BRANDON T. BUNK REGISTERED PROFESSIONAL ENGINEER
No. 0000075
STATE OF INDIANA
Professional Engineer
DATE: 4.21.04

Schneider

THE SCHNEIDER CORPORATION
12821 E. New Market Street
Suite 100
Carmel, IN 46032
Telephone: 317.569.8112
Fax: 317.821.3410
www.schneidercorp.com

Architecture
Civil Engineering
Environmental Engineering
Geotechnical Services
GIS * LIS
Home Builder Services
Interior Design
Land Surveying
Landscape Architecture
Transportation Engineering

CONNER CROSSING OF NOBLESVILLE COTTAGE GROVE PHASE ONE
NOBLESVILLE, INDIANA
PRIMROSE DEVELOPMENT, L.L.C.
CARMEL, INDIANA

DATE: 6/26/02 PROJECT NO.: 3659.005
DRAWN BY: BET CHECKED BY:
SHEET TITLE: DEVELOPMENT PLAN
DRAWING FILES:
XREF: CA-1-BS.DWG
XREF: CO-1-BS.DWG
XREF: FR-1-BS.DWG
XREF: BR-1-BS.DWG
XREF: FUTR-BS.DWG
XREF: 3659001S.DWG
SHEET NO.:



GENERAL NOTES

- ALL GRADES AT BOUNDARY SHALL MEET EXISTING GRADES.
- IT SHALL BE THE RESPONSIBILITY OF EACH CONTRACTOR TO VERIFY ALL EXISTING UTILITIES AND CONDITIONS PERTAINING TO HIS PHASE OF WORK. IT SHALL ALSO BE THE CONTRACTOR'S RESPONSIBILITY TO CONTACT THE OWNERS OF THE VARIOUS UTILITIES FOR PROPER STAKE LOCATIONS FOR EACH UTILITY BEFORE WORK IS STARTED. THE CONTRACTOR SHALL NOTIFY IN WRITING THE OWNER AND THE ENGINEER OF ANY CHANGES, OMISSIONS, OR ERRORS FOUND ON THESE PLANS OR IN THE FIELD BEFORE WORK IS STARTED OR RESUMED.
- STANDARD SPECIFICATIONS FOR THE CITY OF NOBLESVILLE, INDIANA SHALL APPLY FOR ALL SANITARY SEWER AND STORM SEWER.
- ANY PART OF THE SANITARY OR STORM SEWER TRENCHES RUNNING UNDER PAVED AREAS TO BE BACKFILLED WITH GRANULAR MATERIAL.
- THE SIZE AND LOCATION OF EXISTING UTILITIES SHOWN ARE PER INFORMATION PROVIDED BY THE RESPECTIVE UTILITY COMPANIES. ALL UTILITY COMPANIES SHOULD BE NOTIFIED PRIOR TO ANY EXCAVATION FOR FIELD LOCATION OF SERVICES.
- SERVICE WALKS SHALL BE NON-REINFORCED CONCRETE 4" THICK AND 4' IN WIDTH.
- 4" CONCRETE SERVICE WALK ACROSS FRONTAGE OF EACH LOT TO BE CONSTRUCTED BY OTHERS.
- EXPANSION JOINTS ARE TO BE PLACED AT ALL WALK INTERSECTIONS AND BETWEEN WALKS AND PLATFORMS. SIDEWALK SCORES ARE TO BE EQUALLY SPACED BETWEEN EXPANSION JOINTS, CONTRACTION JOINTS AND PERPENDICULAR TO SIDEWALKS AT 5' INTERVALS OR LESS WITH A CONTRACTION JOINT EVERY 20' OR LESS.
- TEMPORARY TRAFFIC CONTROL DURING CONSTRUCTION TO CONFORM TO APPLICABLE LOCAL AND STATE STANDARDS. ALL CONSTRUCTION ACTIVITY ON THIS SITE TO BE PERFORMED IN COMPLIANCE WITH APPLICABLE O.S.H.A. STANDARDS FOR WORKER SAFETY.
- CONTRACTOR SHALL MINIMIZE DAMAGE TO EXISTING TREES. REMOVE AND BACKFILL ALL AREAS WHERE ANY FIELD TILE OR REGULATED DRAIN CROSSES PROPOSED USE PADS OR RIGHT-OF-WAYS. ALL FIELD TILES INTERCEPTED TO BE PERPETUATED INTO STORM SEWER SYSTEM OR LAKE. THE SUBCONTRACTOR SHALL NOTIFY IN WRITING THE OWNER AND THE ENGINEER IN ANY CIRCUMSTANCES WHERE THIS CANNOT BE ACCOMPLISHED.
- ALL FILL AREAS SHALL BE COMPACTED TO AT LEAST 95 PERCENT OF THE MAXIMUM DRY DENSITY (ASTM D-1557). FILL UNDER THE FOOTING SHALL BE COMPACTED TO AT LEAST 95 PERCENT OF THE MAXIMUM DRY DENSITY (ASTM D-1557). DEVELOPER SHALL CONFORM TO MONUMENTATION STANDARDS OF THE CITY OF NOBLESVILLE AS GRAPHICALLY DEFINED OF THE SECONDARY PLAT AND SPECIFIED UNDER THE "MONUMENTATION GUIDELINES", SEE SHEET C808.

REVISIONS:
 1. SET, 08/09/02, REVISED PER THE COMMENTS.
 2. SET, 08/09/02, REVISED PER CITY OF NOBLESVILLE COMMENTS.
 3. SET, 08/09/02, REVISED PER CITY OF NOBLESVILLE COMMENTS.
 4. SET, 08/09/02, REVISED PER CITY OF NOBLESVILLE COMMENTS.
 5. SET, 08/09/02, REVISED PER CITY OF NOBLESVILLE COMMENTS.
 6. SET, 08/09/02, REVISED PER CITY OF NOBLESVILLE COMMENTS.

This information was prepared for input into the system (GIS). This information is not to be used for official record of the City.
 Date: 4-21-04
 Entered by: SLM

BRANDON T. BURKE
 No. 0000075
 STATE OF INDIANA
 PROFESSIONAL ENGINEER

DATE: 4-21-04
 THIS DRAWING AND THE IDEAS, DESIGNS AND CONCEPTS CONTAINED THEREIN ARE THE EXCLUSIVE INTELLECTUAL PROPERTY OF THE SCHNEIDER CORPORATION AND ARE NOT TO BE REPRODUCED, REPRODUCED, IN WHOLE OR IN PART, WITHOUT THE WRITTEN CONSENT OF THE SCHNEIDER CORPORATION.

© COPYRIGHTED BY THE SCHNEIDER CORP. (2002)

Schneider

THE SCHNEIDER CORPORATION
 12821 E. New Market Street
 Suite 100
 Carmel, IN 46032
 Telephone: 317.569.8112
 Fax: 317.826.3410
 www.schneidercorp.com

Architecture
 Civil Engineering
 Environmental Engineering
 Geotechnical Services
 GIS * LIS
 Home Builder Services
 Interior Design
 Land Surveying
 Landscape Architecture
 Transportation Engineering

CONNER CROSSING OF NOBLESVILLE
 COTTAGE GROVE, PHASE ONE,
 NOBLESVILLE, INDIANA

PRIMROSE DEVELOPMENT, L.L.C.
 CARMEL, INDIANA

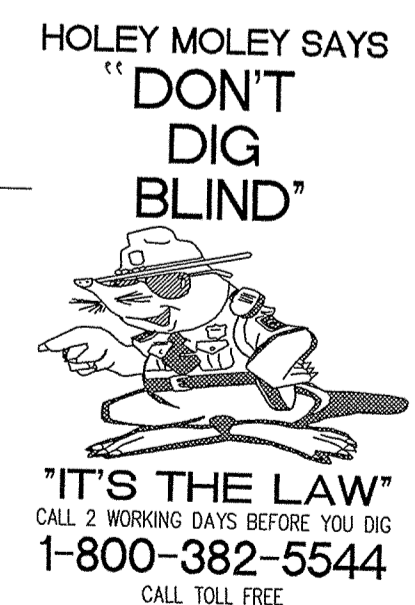
DATE: 6/26/02	PROJECT NO.: 3659.005
DRAWN BY: BET	CHECKED BY:
SHEET TITLE: DEVELOPMENT PLAN	
DRAWING FILES: N:\3659\005\DWG\C101-C102.DWG XREF: CA-1-BSDWG XREF: C01-1-BSDWG XREF: F01-1-BSDWG XREF: BRX-1-BSDWG XREF: FUTR-BSDWG XREF: 3659010.DWG	
SHEET NO.:	

**SUB-SURFACE DRAINAGE
 SANITARY SEWER
 STORM SEWER
 RECORD DRAWING**

LEGEND

	Existing Storm Sewer
	New Storm Sewer
	Existing Sanitary Sewer
	New Sanitary Sewer
	Existing Contour
	Existing Elevation
	New Pavement Grade
	All Other Finish Grades
	Match Existing Grades
	Corrected Grades
	Storm Structure Number
	Sanitary Structure Number
	No Pad Construction
	Denotes Approximate Pad Size and Minimum Pad Elevation
	Flow Arrow
	6" Subsurface Drain Swale (E)
	Existing Trees
	Existing Gas Main
	Existing Telephone
	Existing Water Main
	Existing Flowline
	Existing Overhead Utilities
	Minimum Finished Floor Elevation
	Construction Fence-Tree Preservation Area

ASSUMED NORTH
 SCALE: 1"=50'



"IT'S THE LAW"
 CALL 2 WORKING DAYS BEFORE YOU DIG
 1-800-382-5544
 CALL TOLL FREE

PER INDIANA STATE LAW 15-60-1991,
 IT IS AGAINST THE LAW TO EXCAVATE
 WITHOUT NOTIFYING THE UNDERGROUND
 LOCATION SERVICE TWO (2) WORKING
 DAYS BEFORE COMMENCING WORK.

BENCHMARK

BM #1 - In Hamilton County, about 1.4 miles south of Westfield, 1.4 miles south along "old" U.S. Highway 31 from its intersection with State Road 32 in Westfield to an east-west cross road, at a 1.5 foot pipe headwall of the culvert, 23 feet north of the center line of the east-west road, 15 feet east of the center line of the north-south road, 60 feet north of the south face of the headwall, a chiseled triangle Elevation = 845.033 (NOVD 1929)

BM #2 - In Hamilton County, about 1.4 miles south of Westfield, 1.4 miles south along "old" U.S. Highway 31 from its intersection with State Road 32 in Westfield to an east-west cross road, once 0.1 mile east to a concrete bridge over Cool Creek, set in the top of the west end of the north guardrail of the bridge, 11 feet north of the center line of the road, 2.9 feet above the roadway, 1.4 feet east of the west face of the north guardrail, a Standard Indiana Flood Control and Water Resources Commission bronze benchmark tablet, stamped "HAM 16 1959" (Note: bronze disk gone) Elevation = 846.716

NOTE: SAWCUT EXISTING EDGE OF PAVEMENT 20 FEET FROM NEW PAVEMENT AT A DEPTH OF 1 INCH. EXISTING ASPHALT SURFACE SHALL BE MILLED 1 INCH.

NOTE: ADJUST EXISTING BURIED IRRIGATION LINE AT STA. 2+50 PEBBLE BROOK DRIVE.

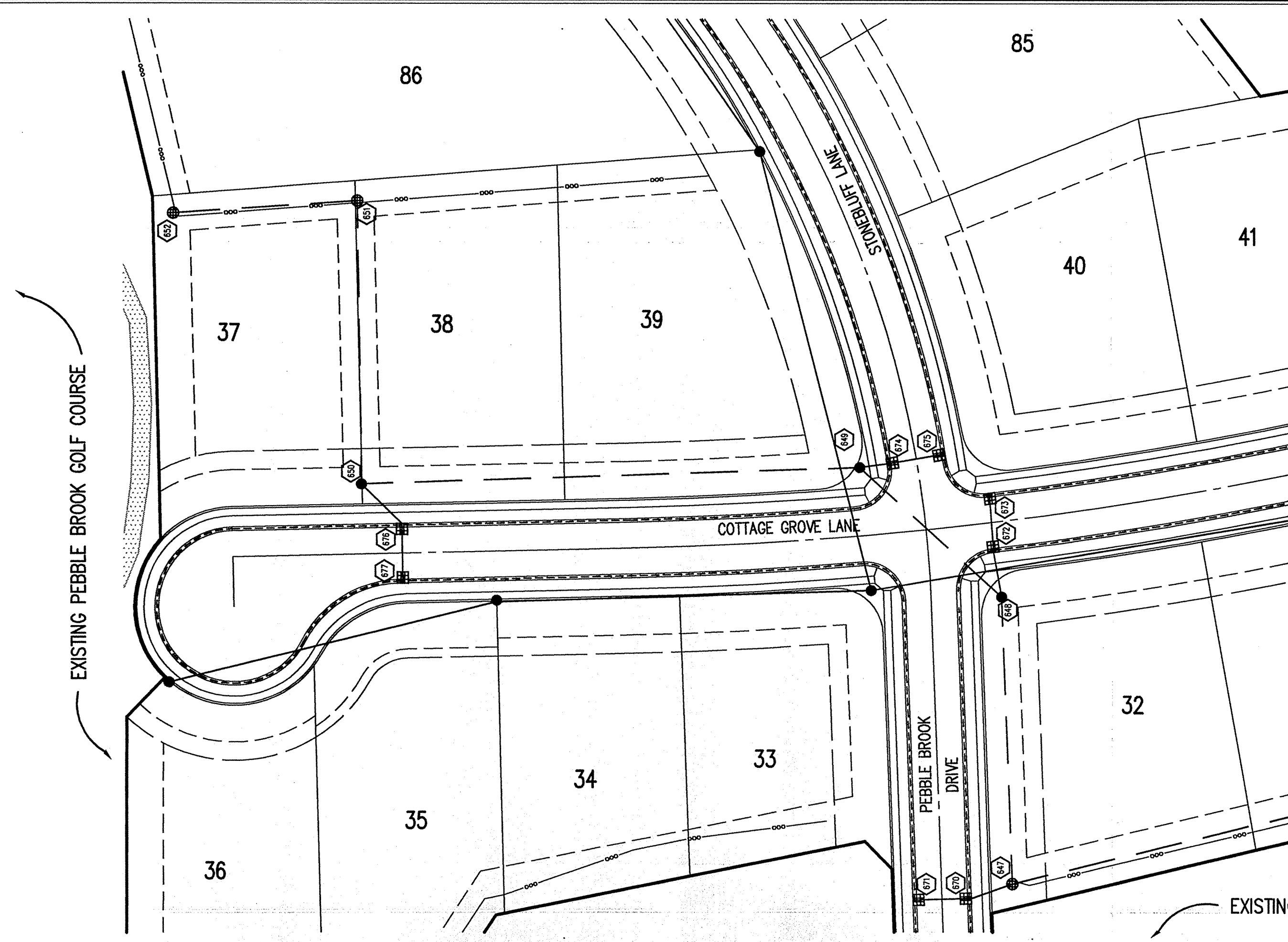
CAUTION-BURIED UTILITIES MAY EXIST ALONG GOLF COURSE FRONTAGE. NOTIFY ENGINEER OR DEVELOPER IF ENCOUNTERED IMMEDIATELY.

CAUTION-BURIED UTILITIES MAY EXIST ALONG GOLF COURSE FRONTAGE. NOTIFY ENGINEER OR DEVELOPER IF ENCOUNTERED IMMEDIATELY.

NOTE: LOTS 34-39 & 86 CONTAIN EXISTING MOUNDING. CONTRACTOR TO REMOVE FILL AND ENSURE STRUCTURAL MATERIAL AND COMPACTION.

UTILITY COMPANIES:
 GAS: Westfield/Indiana Gas, P.O. Box 1700, Noblesville, IN 46060, (317) 778-5554, Alt. Mr. Dan Rindler
 ELECTRIC: Hamilton County Surveyor's Office, Kurt Wampler, Suite 188, One Hamilton County Square, Noblesville, IN 46060-2230, (317) 778-8495
 WATER: Indianapolis Water Company, 1220 Waterway Boulevard, Indianapolis, IN 46206, (317) 263-6446, Alt. Mr. Stan Graves
 TELEPHONE: Verizon, 3902 Hoque Road, Noblesville, IN 46060, (917) 984-2334, Alt. Steve Costlow
 PIPES: Poshole Eastern Pipe Line, 9370 Zonola Road, Indianapolis, IN 46266, (317) 233-2333, Alt. Mr. Sharon Proter

NOTE: The size and location of utilities are per plans and locations provided by the respective utility companies. All utility companies shall be notified prior to any excavation for field location of services.



HOLEY MOLEY SAYS
"DON'T
DIG
BLIND"
"IT'S THE LAW"
CALL 2 WORKING DAYS BEFORE YOU DIG
1-800-382-5544
CALL TOLL FREE
PER INDIANA STATE LAW IS-69-1991,
IT IS AGAINST THE LAW TO EXCAVATE
WITHOUT NOTIFYING THE UNDERGROUND
LOCATION SERVICE TWO (2) WORKING
DAYS BEFORE COMMENCING WORK.

GENERAL NOTES

- TEMPORARY TRAFFIC CONTROL DURING CONSTRUCTION TO CONFORM TO APPLICABLE LOCAL AND STATE STANDARDS.
- ALL CONSTRUCTION ACTIVITY ON THIS SITE TO BE PERFORMED IN COMPLIANCE WITH APPLICABLE O.S.H.A. STANDARDS FOR WORKER SAFETY.
- IT SHALL BE THE CONTRACTORS RESPONSIBILITY TO FIELD VERIFY ALL UTILITY LOCATIONS BEFORE CONSTRUCTION BEGINS.
- CONTRACTORS SHALL MINIMIZE DAMAGE TO EXISTING TREES.

LEGEND/DETAILS

Sheet	Detail	Description
CB04		Bedding Detail - Reinforced Concrete Pipe (RCP)
CB05		Roll Curb Inlet Detail
CB05		Beehive Inlet Detail
CB05		Storm Manhole Detail
CB05		Precast Concrete End Section
CB12		Riprap Detail @ End Section

BENCHMARK

BM #1 - In Hamilton County, about 1.4 miles south of Westfield, 1.4 miles south along "old" U.S. Highway 31 from its intersection with State Road 32 in Westfield to an east-west cross road, at a 1.5 foot pipe culvert under the road, in 1st northeast quarter of the intersection, set in the top of the east concrete headwall of the culvert, 23 feet north of the center line of the east-west road, 15 feet east of the center line of the north-south road, 801 feet north of the south face of the headwall, a chiseled triangle
Elevation = 845.033 (NGVD 1929)

BM #2 - In Hamilton County, about 1.4 miles south of Westfield, 1.4 miles south along "old" U.S. Highway 31 from its intersection with State Road 32 in Westfield to an east-west cross road, thence 0.1 mile east to a concrete bridge over Cool Creek, set in the top at the west end of the north guardrail of the bridge, 11 feet north of the center line of the road, 2.9 feet above the roadway, 1.4 feet east of the west face of the north guardrail, a Standard Indiana Flood Control and Water Resources Commission bronze benchmark tablet, stamped "HAM 16 1958" (Note: bronze disk gone)
Elevation = 846.716

REVISIONS:
1. SET, 08/07/02, REVISED PER TAC COMMENTS.
2. SET, 08/04/04, REVISED PER CITY OF NOBLESVILLE COMMENTS.
3. SET, 07/26/04, RECORD DRAWING.

This information was gathered for use in the Hamilton County Geographic Information System (GIS) and is not to be used as an official record of the county.
Entry Date: 4-21-04
Entered By: SLM

BRANDT & BURKE
REGISTERED PROFESSIONAL ENGINEER
No. 000075
STATE OF INDIANA

DATE: _____
THIS DRAWING AND THE IDEAS, DESIGNS AND CONCEPTS CONTAINED HEREIN ARE THE EXCLUSIVE INTELLECTUAL PROPERTY OF THE SCHNEIDER CORPORATION AND ARE NOT TO BE USED OR REPRODUCED, IN WHOLE OR IN PART, WITHOUT THE WRITTEN CONSENT OF THE SCHNEIDER CORPORATION.

© COPYRIGHTED BY THE SCHNEIDER CORP. (2002)

Schneider

THE SCHNEIDER CORPORATION
12821 E. New Market Street
Suite 100
Carmel, IN 46032
Telephone: 317.569.8112
Fax: 317.825.4410
www.schneider-corp.com

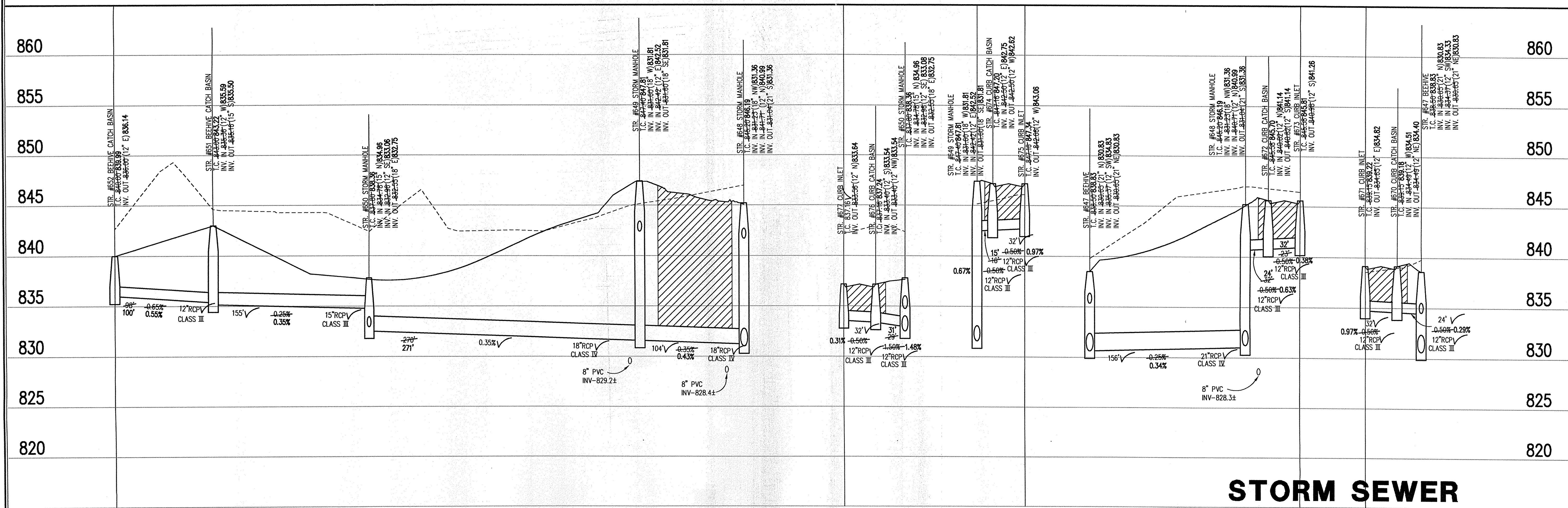
Architecture
Civil Engineering
Environmental Engineering
Geotechnical Services
GIS • LIS
Home Builder Services
Interior Design
Land Surveying
Landscape Architecture
Transportation Engineering

**CONNER CROSSING OF NOBLESVILLE
COTTAGE GROVE PHASE ONE**
NOBLESVILLE, INDIANA
PRIMROSE DEVELOPMENT, L.L.C.
CARMEL, INDIANA

DATE: 6/26/02 PROJECT NO.: 3659.005
DRAWN BY: DCC CHECKED BY:
SHEET TITLE: STORM SEWER PLAN & PROFILE
DRAWING FILES: N:\3659\005\DWG\C601-606.DWG
XREF: CA-1-B5.DWG
XREF: CO-1-B5.DWG
XREF: FB-1-B5.DWG
XREF: BRK-1-B5.DWG
XREF: 3659005.DWG
XREF: FOUR-B5.DWG
XREF: 005-STM.DWG
SHEET NO.:

STORM SEWER PLAN

SCALE: 1"=50'



**STORM SEWER
RECORD DRAWING**

STORM SEWER PROFILE

LEGEND

Existing Grade	New Grade	Granular Backfill

SCALE: HORZ.: 1"=50'
VERT.: 1"=5'

C601

This copy is from the Digital Archive of the Hamilton County Surveyor's Office; Noblesville, In 46060

Sheet	Detail	Description
C804		Bedding Detail - Reinforced Concrete Pipe (RCP)
C805		Roll Curb Inlet Detail
C805		Beehive Inlet Detail
C805		Storm Manhole Detail
C805		Precast Concrete End Section
C812		Riprap Detail @ End Section

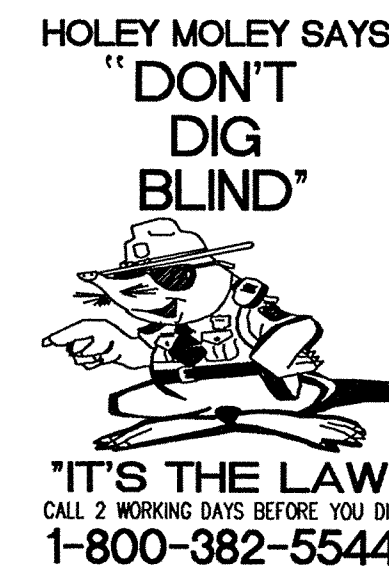
LEGEND/DETAILS

NOTE

BENCHMARK

BM #1 - In Hamilton County, about 1.4 miles south of Westfield, 1.4 miles south along "old" U.S. Highway 31 from its intersection with State Road 32 in Westfield to an east-west cross road, at a 1.5 foot pipe culvert under the road in the northeast quarter of the intersection, set in the top of the east concrete headwall of the culvert, 23 feet north of the center line of the east-west road, 15 feet east of the center line of the north-south road, 601 feet north of the south face of the headwall, a chiseled triangle Elevation = 845.033 (NGVD 1929)

BM #2 - In Hamilton County, about 1.4 miles south of Westfield, 1.4 miles south along "old" U.S. Highway 31 from its intersection with State Road 32 in Westfield to an east-west cross road, thence 0.1 mile east to a concrete bridge over Coal Creek, set in the top at the west end of the north guardrail of the bridge, 11 feet north of the center line of the road, 2.9 feet above the roadway, 1.4 feet east of the west face of the north guardrail, a Standard Indiana Flood Control and Water Resources Commission bronze benchmark label, stamped "HAM 16 1959" (Note: bronze disk gone) Elevation = 846.716



"IT'S THE LAW"
CALL 2 WORKING DAYS BEFORE YOU DIG
1-800-382-5544

CALL TOLL FREE
PER INDIANA STATE LAW IS-69-1991,
IT IS AGAINST THE LAW TO EXCAVATE
WITHOUT NOTIFYING THE UNDERGROUND
LOCATION SERVICE TWO (2) WORKING
DAYS BEFORE COMMENCING WORK.

GENERAL NOTES

1. TEMPORARY TRAFFIC CONTROL DURING CONSTRUCTION TO CONFORM TO APPLICABLE LOCAL AND STATE STANDARDS.
2. ALL CONSTRUCTION ACTIVITY ON THIS SITE TO BE PERFORMED IN COMPLIANCE WITH APPLICABLE O.S.H.A. STANDARDS FOR WORKER SAFETY.
3. IT SHALL BE THE CONTRACTORS RESPONSIBILITY TO FIELD VERIFY ALL UTILITY LOCATIONS BEFORE CONSTRUCTION BEGINS.
4. CONTRACTORS SHALL MINIMIZE DAMAGE TO EXISTING TREES.

REVISIONS:
1. SET 08/09/02 REVISED PER CITY OF NOBLESVILLE COMMENTS.
2. SET 09/03/02 REVISED PER CITY OF NOBLESVILLE COMMENTS.
3. SET 11/26/04 "RECORD DRAWING"
4. SET 11/26/04 "RECORD DRAWING"

This information was gathered for input into the Geospatial Information System (GIS). This document is considered an official record of the GIS.
Entry Date: 4-21-04
Entered By: SLM

BRANDT T. BURKE
REGISTERED
No. 0000075
STATE OF INDIANA
PROFESSIONAL ENGINEER

DATE:
THIS DRAWING AND THE IDEAS, DESIGNS AND CONCEPTS CONTAINED THEREIN ARE THE EXCLUSIVE INTELLECTUAL PROPERTY OF THE SCHNEIDER CORPORATION AND ARE NOT TO BE USED OR REPRODUCED, IN WHOLE OR IN PART, WITHOUT THE WRITTEN CONSENT OF THE SCHNEIDER CORPORATION.
© COPYRIGHTED BY THE SCHNEIDER CORP. (2002)

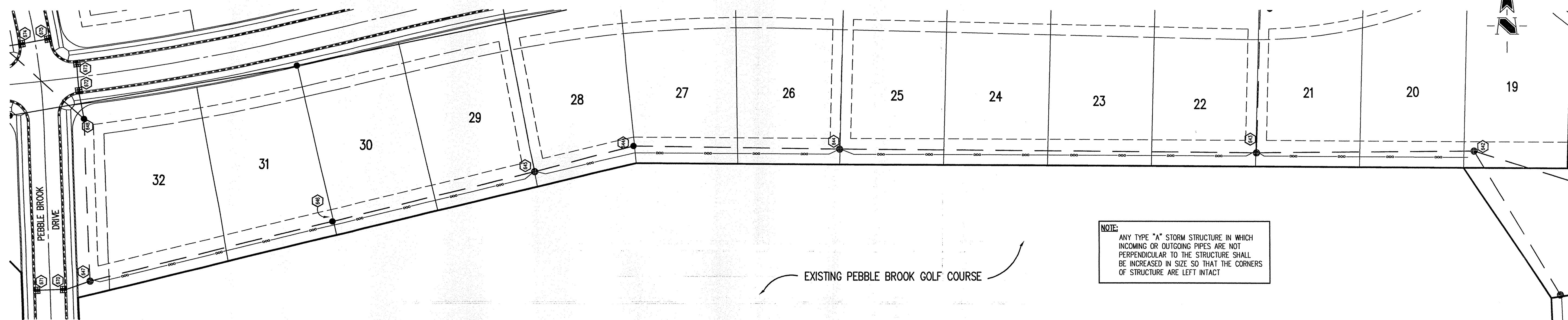
Schneider

THE SCHNEIDER CORPORATION
12821 E. New Market Street
Suite 100
Carmel, IN 46032
Telephone: 317.569.8112
Fax: 317.826.6410
www.schneidercorp.com

Architecture
Civil Engineering
Environmental Engineering
Geotechnical Services
GIS • LIS
Home Builder Services
Interior Design
Land Surveying
Landscape Architecture
Transportation Engineering

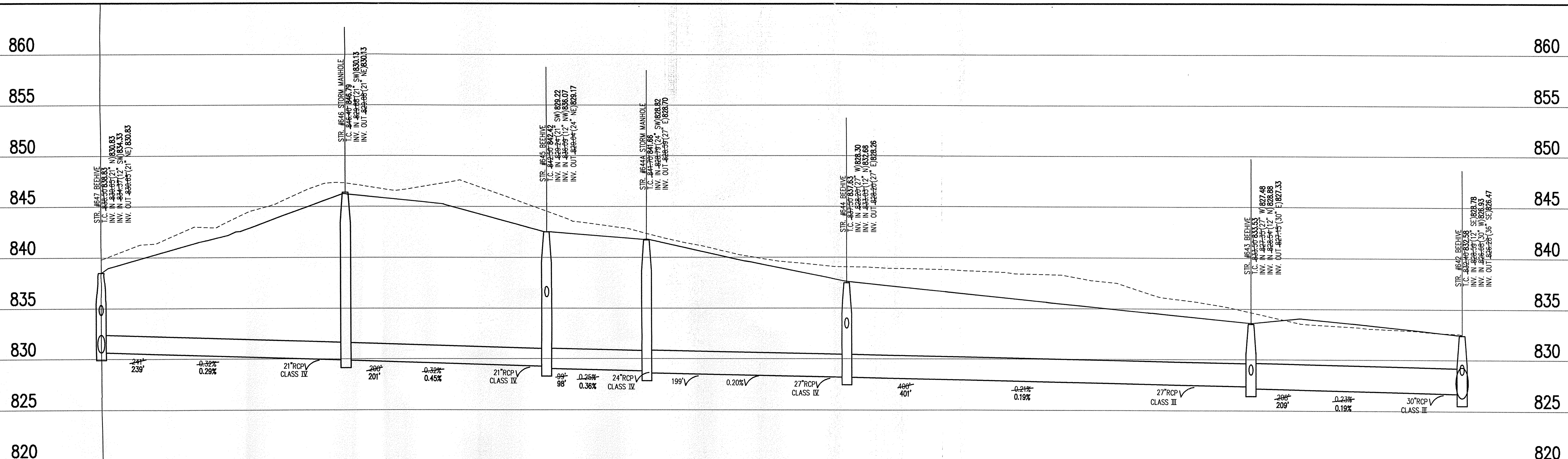
CONNER CROSSING OF NOBLESVILLE
COTTAGE GROVE PHASE ONE
NOBLESVILLE, INDIANA
PRIMROSE DEVELOPMENT, L.L.C.
CARMEL, INDIANA

DATE: 6/26/02 PROJECT NO.: 3659.005
DRAWN BY: DCC CHECKED BY:
SHEET TITLE: STORM SEWER PLAN & PROFILE
DRAWING FILES:
N:\3\3659\005\DWG\2601-506.DWG
XREF: CA-1-BS.DWG
XREF: CO-1-BS.DWG
XREF: PB-1-BS.DWG
XREF: BR-1-BS.DWG
XREF: 3659010.DWG
XREF: FUTR-BS.DWG
XREF: 005-SM.DWG
SHEET NO.: C602



STORM SEWER PLAN

SCALE: 1"=50'



STORM SEWER RECORD DRAWING

STORM SEWER PROFILE

LEGEND

Existing Grade	New Grade	Granular Backfill

SCALE: HORZ.: 1"=50'
VERT.: 1"=5'

BENCHMARK

BM #1 - In Hamilton County, about 1.4 miles south of Westfield, 1.4 miles south along "old" U.S. Highway 31 from its intersection with State Road 32 in Westfield to an east-west cross road, at a 1.5 foot pipe culvert under the road, in the northeast quarter of the intersection, set in the top of the east concrete headwall of the culvert, 23 feet north of the center line of the east-west road, 15 feet east of the center line of the north-south road, 501 feet north of the south face of the headwall, a chiseled triangle Elevation = 845.033 (NGVD 1929)

BM #2 - In Hamilton County, about 1.4 miles south of Westfield, 1.4 miles south along "old" U.S. Highway 31 from its intersection with State Road 32 in Westfield to an east-west cross road, thence 0.1 mile east to a concrete bridge over Cool Creek, set in the top of the west end of the north guardrail of the bridge, 11 feet north of the center line of the road, 2.9 feet above the roadway, 1.4 feet east of the west face of the north guardrail, a Standard Indiana Flood Control and Water Resources Commission bronze benchmark (table, stamped "HAM 16 1959" (Note: bronze disk gone) Elevation = 846.716

HOLEY MOLEY SAYS
"DON'T DIG BLIND"
"IT'S THE LAW"
CALL 2 WORKING DAYS BEFORE YOU DIG
1-800-382-5544
CALL TOLL FREE
PER INDIANA STATE LAW IS-69-1991
IT IS AGAINST THE LAW TO EXCAVATE
WITHOUT NOTIFYING THE UNDERGROUND
LOCATION SERVICE TWO (2) WORKING
DAYS BEFORE COMMENCING WORK.

GENERAL NOTES

- TEMPORARY TRAFFIC CONTROL DURING CONSTRUCTION TO CONFORM TO APPLICABLE LOCAL AND STATE STANDARDS.
- ALL CONSTRUCTION ACTIVITY ON THIS SITE TO BE PERFORMED IN COMPLIANCE WITH APPLICABLE O.S.H.A. STANDARDS FOR WORKER SAFETY.
- IT SHALL BE THE CONTRACTORS RESPONSIBILITY TO FIELD VERIFY ALL UTILITY LOCATIONS BEFORE CONSTRUCTION BEGINS.
- CONTRACTORS SHALL MINIMIZE DAMAGE TO EXISTING TREES.

LEGEND/DETAILS

Sheet Number	Description
C804	Bedding Detail - Reinforced Concrete Pipe (RCP)
C805	Roll Curb Inlet Detail
C805	Beehive Inlet Detail
C805	Storm Manhole Detail
C805	Precast Concrete End Section
C812	RipRap Detail @ End Section

NOTE

REVISIONS:
1. 11/21/02 REVISED PER TAC COMMENTS.
2. 11/21/02 REVISED PER TAC COMMENTS.
3. 11/21/02 REVISED PER TAC COMMENTS.
4. 11/21/02 REVISED PER TAC COMMENTS.

This information was gathered for input into the Hamilton County Geographic Information System (GIS) and is not to be used or reproduced, in whole or in part, without the written consent of the Schneider Corporation.

Entry Date: 4-21-06
Entered by: SLM

BRANDON T. BURKE
REGISTERED
No. 0030075
STATE OF INDIANA
PROFESSIONAL ENGINEER

Branden T. Burke

DATE: _____
THIS DRAWING AND THE IDEAS, DESIGNS AND CONCEPTS CONTAINED THEREIN ARE THE EXCLUSIVE INTELLECTUAL PROPERTY OF THE SCHNEIDER CORPORATION AND ARE NOT TO BE USED OR REPRODUCED, IN WHOLE OR IN PART, WITHOUT THE WRITTEN CONSENT OF THE SCHNEIDER CORPORATION.

© COPYRIGHTED BY THE SCHNEIDER CORP. (2002)

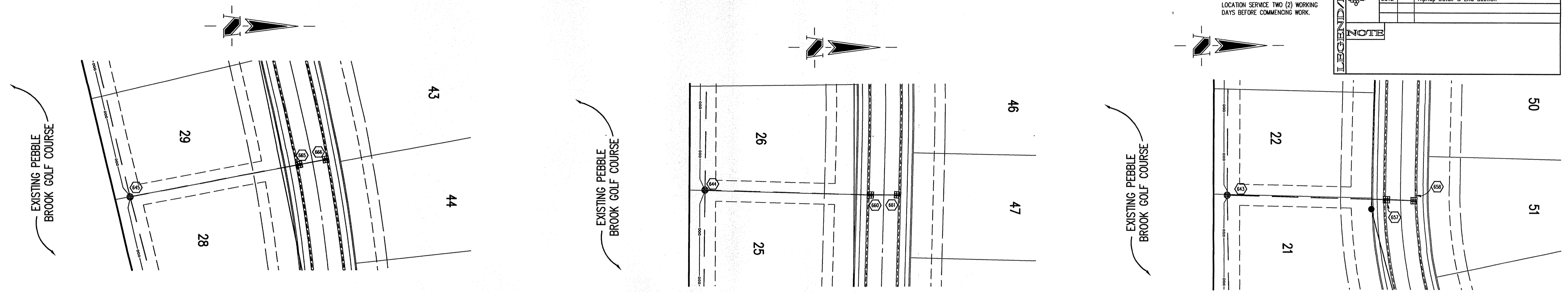
Schneider

THE SCHNEIDER CORPORATION
12821 E. New Market Street
Suite 100
Carmel, IN 46032
Telephone: 317.569.8112
Fax: 317.826.6410
www.schneidercorp.com

Architecture
Civil Engineering
Environmental Engineering
Geotechnical Services
GIS • LIS
Home Builder Services
Interior Design
Land Surveying
Landscape Architecture
Transportation Engineering

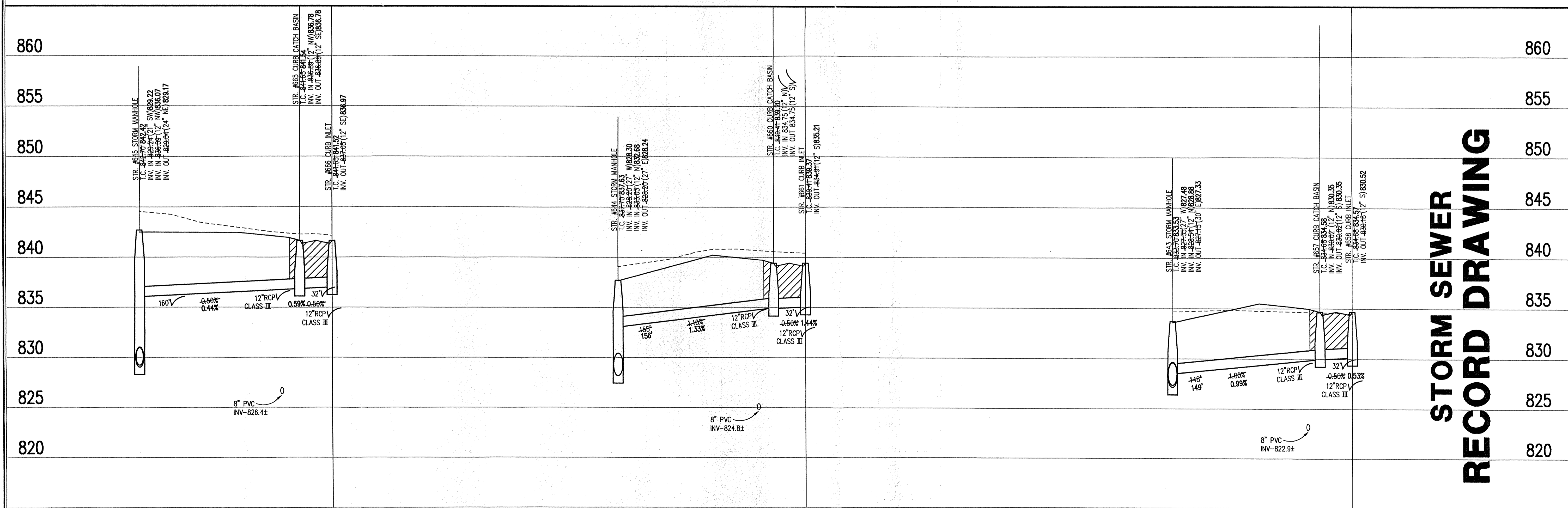
CONNER CROSSING OF NOBLESVILLE
COTTAGE GROVE, PHASE ONE
NOBLESVILLE, INDIANA
PRIMROSE DEVELOPMENT, L.L.C.
CARMEL, INDIANA

DATE: 6/26/02 PROJECT NO.: 3659.005
DRAWN BY: DCC CHECKED BY:
SHEET TITLE: STORM SEWER PLAN & PROFILE
DRAWING FILE: N:\3\3659\005\DWG\C601-606.DWG
XREF: CA-1-BS.DWG
XREF: CO1-1-BS.DWG
XREF: PR1-1-BS.DWG
XREF: BRX-1-BS.DWG
XREF: 3659001S.DWG
XREF: FUTR-BS.DWG
XREF: 005-SIM.DWG
SHEET NO.: C603



STORM SEWER PLAN

SCALE: 1"=50'



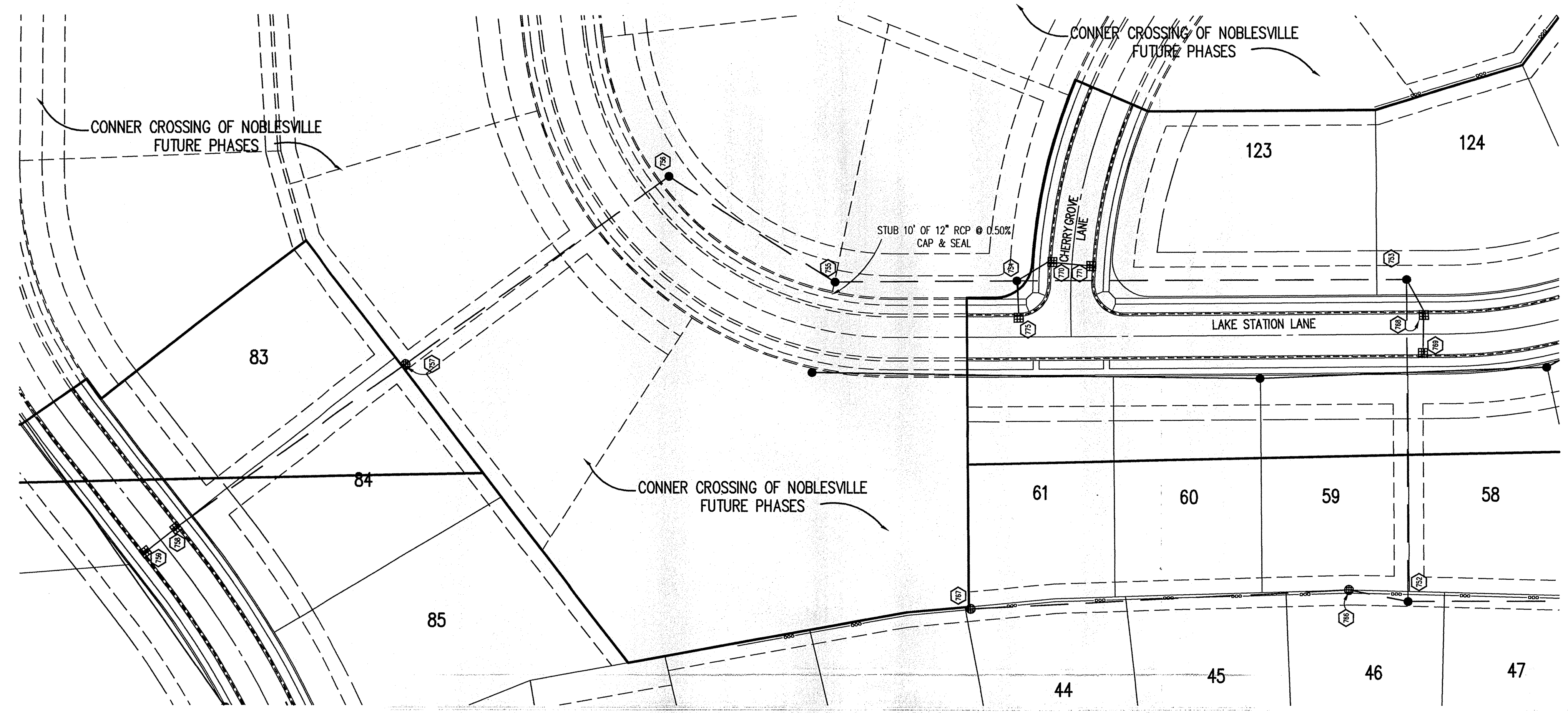
STORM SEWER RECORD DRAWING

STORM SEWER PROFILE

LEGEND

	Existing Grade
	New Grade
	Granular Backfill

SCALE: HORZ.: 1"=50'
VERT.: 1"=5'



HOLEY MOLEY SAYS
"DON'T DIG BLIND"

"IT'S THE LAW"
 CALL 2 WORKING DAYS BEFORE YOU DIG
1-800-382-5544
 CALL TOLL FREE
 PER INDIANA STATE LAW 15-69-1991,
 IT IS AGAINST THE LAW TO EXCAVATE
 WITHOUT NOTIFYING THE UNDERGROUND
 LOCATION SERVICE TWO (2) WORKING
 DAYS BEFORE COMMENCING WORK.

GENERAL NOTES

1. TEMPORARY TRAFFIC CONTROL DURING CONSTRUCTION TO CONFORM TO APPLICABLE LOCAL AND STATE STANDARDS.
2. ALL CONSTRUCTION ACTIVITY ON THIS SITE TO BE PERFORMED IN COMPLIANCE WITH APPLICABLE O.S.H.A. STANDARDS FOR WORKER SAFETY.
3. IT SHALL BE THE CONTRACTORS RESPONSIBILITY TO FIELD VERIFY ALL UTILITY LOCATIONS BEFORE CONSTRUCTION BEGINS.
4. CONTRACTORS SHALL MINIMIZE DAMAGE TO EXISTING TREES.

LEGEND/DETAILS

Sheet	Detail	Description
C804		Bedding Detail - Reinforced Concrete Pipe (RCP)
C805		Roll Curb Inlet Detail
C805		Beehive Inlet Detail
C805		Storm Manhole Detail
C805		Precast Concrete End Section
C812		RipRap Detail @ End Section

BENCHMARK

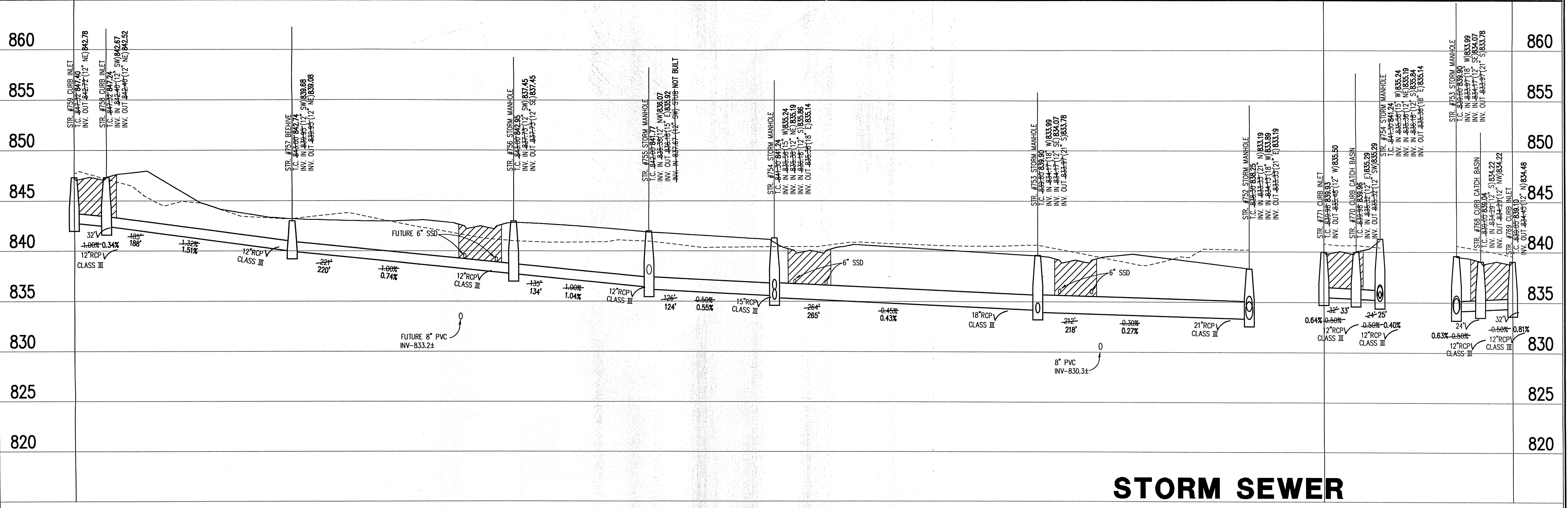
BM #1 - In Hamilton County, about 1.4 miles south of Westfield, 1.4 miles south along "old" U.S. Highway 31 from its intersection with State Road 32 in Westfield to an east-west cross road, at a 1.5 foot pipe culvert under the road, in the northeast quarter of the intersection, set in the top of the east concrete headwall of the culvert, 23 feet north of the center line of the east-west road, 15 feet east of the center line of the north-south road, 80 feet north of the south face of the headwall, a chiseled triangle
 Elevation = 845.033 (NGVD 1929)

BM #2 - In Hamilton County, about 1.4 miles south of Westfield, 1.4 miles south along "old" U.S. Highway 31 from its intersection with State Road 32 in Westfield to an east-west cross road, thence 0.1 mile east to a concrete bridge over Cool Creek, set in the top of the west end of the north guardrail of the bridge, 11 feet north of the center line of the road, 2.9 feet above the roadway, 1.4 feet east of the west face of the north guardrail, a Standard Indiana Flood Control and Water Resources Commission bronze benchmark tablet, stamped "HAM 16 1959" (Note: bronze disk gone)
 Elevation = 846.716

NOTE:
 ANY TYPE "A" STORM STRUCTURE IN WHICH INCOMING OR OUTGOING PIPES ARE NOT PERPENDICULAR TO THE STRUCTURE SHALL BE INCREASED IN SIZE SO THAT THE CORNERS OF STRUCTURE ARE LEFT INTACT

STORM SEWER PLAN

SCALE: 1"=50'



STORM SEWER RECORD DRAWING

STORM SEWER PROFILE

LEGEND

Existing Grade	New Grade	Granular Backfill

SCALE: HORZ.: 1"=50'
 VERT.: 1"=5'

REVISIONS:
 1. SET, 08/09/02, REVISED PER TAG COMMENTS.
 2. SET, 08/04/02, REVISED PER CITY OF NOBLESVILLE COMMENTS.
 3. SET, 7/26/04, RECORD DRAWING

This information was gathered for input into the Hamilton County Geographic Information System (GIS) and is not to be used or reproduced, in whole or in part, without the written consent of the Schneider Corporation.

Entered by: **SLM**
 Entry Date: **4-21-04**

BRANDON T. BURKE
 REGISTERED
 No. **0020075**
 STATE OF INDIANA
 PROFESSIONAL ENGINEER

Brandon T. Burke
 DATE:
 THIS DRAWING AND THE IDEAS, DESIGNS AND CONCEPTS CONTAINED HEREIN ARE THE EXCLUSIVE INTELLECTUAL PROPERTY OF THE SCHNEIDER CORPORATION AND ARE NOT TO BE USED OR REPRODUCED, IN WHOLE OR IN PART, WITHOUT THE WRITTEN CONSENT OF THE SCHNEIDER CORPORATION.

© COPYRIGHTED BY THE SCHNEIDER CORP. (2002)

Schneider

THE SCHNEIDER CORPORATION
 12821 E. New Market Street
 Suite 100
 Carmel, IN 46032
 Telephone: 317.569.8112
 Fax: 317.826.2410
 www.schneidercorp.com

Architecture
 Civil Engineering
 Environmental Engineering
 Geotechnical Services
 GIS • LIS
 Home Builder Services
 Interior Design
 Land Surveying
 Landscape Architecture
 Transportation Engineering

CONNER CROSSING OF NOBLESVILLE COTTAGE GROVE PHASE ONE

NOBLESVILLE, INDIANA
 PRIMROSE DEVELOPMENT, L.L.C.
 CARMEL, INDIANA

DATE: 6/26/02 PROJECT NO.: 3659.005
 DRAWN BY: DCC CHECKED BY:
 SHEET TITLE: STORM SEWER PLAN & PROFILE
 DRAWING FILES: N:\3659\005\DWG\3659-005-606.DWG
 XREF: CA-1-B5.DWG
 XREF: COI-1-B5.DWG
 XREF: PM-1-B5.DWG
 XREF: BRK-1-B5.DWG
 XREF: 3659005.DWG
 XREF: FUTR-B5.DWG
 XREF: 005-S1M.DWG
 SHEET NO.: **C604**

NOTE:
ANY TYPE "A" STORM STRUCTURE IN WHICH INCOMING OR OUTGOING PIPES ARE NOT PERPENDICULAR TO THE STRUCTURE SHALL BE INCREASED IN SIZE SO THAT THE CORNERS OF STRUCTURE ARE LEFT INTACT

Sheet	Detail	Description
CB04		Bedding Detail - Reinforced Concrete Pipe (RCP)
CB05		Roll Curb Inlet Detail
CB05		Beehive Inlet Detail
CB05		Storm Manhole Detail
CB05		Precast Concrete End Section
CB12		Riprap Detail @ End Section

HOLEY MOLEY SAYS
"DON'T DIG BLIND"
"IT'S THE LAW"
CALL 2 WORKING DAYS BEFORE YOU DIG
1-800-382-5544
CALL TOLL FREE
PER INDIANA STATE LAW IS-69-1991, IT IS AGAINST THE LAW TO EXCAVATE WITHOUT NOTIFYING THE UNDERGROUND LOCATION SERVICE TWO (2) WORKING DAYS BEFORE COMMENCING WORK.

BENCHMARK

BM #1 - In Hamilton County, about 1.4 miles south of Westfield, 1.4 miles south along "old" U.S. Highway 31 from its intersection with State Road 32 in Westfield to an east-west cross road, at a 1.5 foot pipe culvert under the road, in the northeast quarter of the intersection, set in the top of the east concrete 2. headwall of the culvert, 23 feet north of the center line of the east-west road, 15 feet east of the center line of the north-south road, 601 feet north of the south face of the headwall, a chiseled triangle Elevation = 845.033 (NGVD 1929)

BM #2 - In Hamilton County, about 1.4 miles south of Westfield, 1.4 miles south along "old" U.S. Highway 31 from its intersection with State Road 32 in Westfield to an east-west cross road, thence 0.1 mile east to a concrete bridge over Cool Creek, set in the top of the west end of the north quadrant of the 4. bridge, 11 feet north of the center line of the road, 2.9 feet above the roadway, 1.4 feet east of the west face of the north guardrail, a Standard Indiana Flood Control and Water Resources Commission bronze benchmark label, stamped "HAM 16 1959" (Note: bronze disk gone) Elevation = 846.716

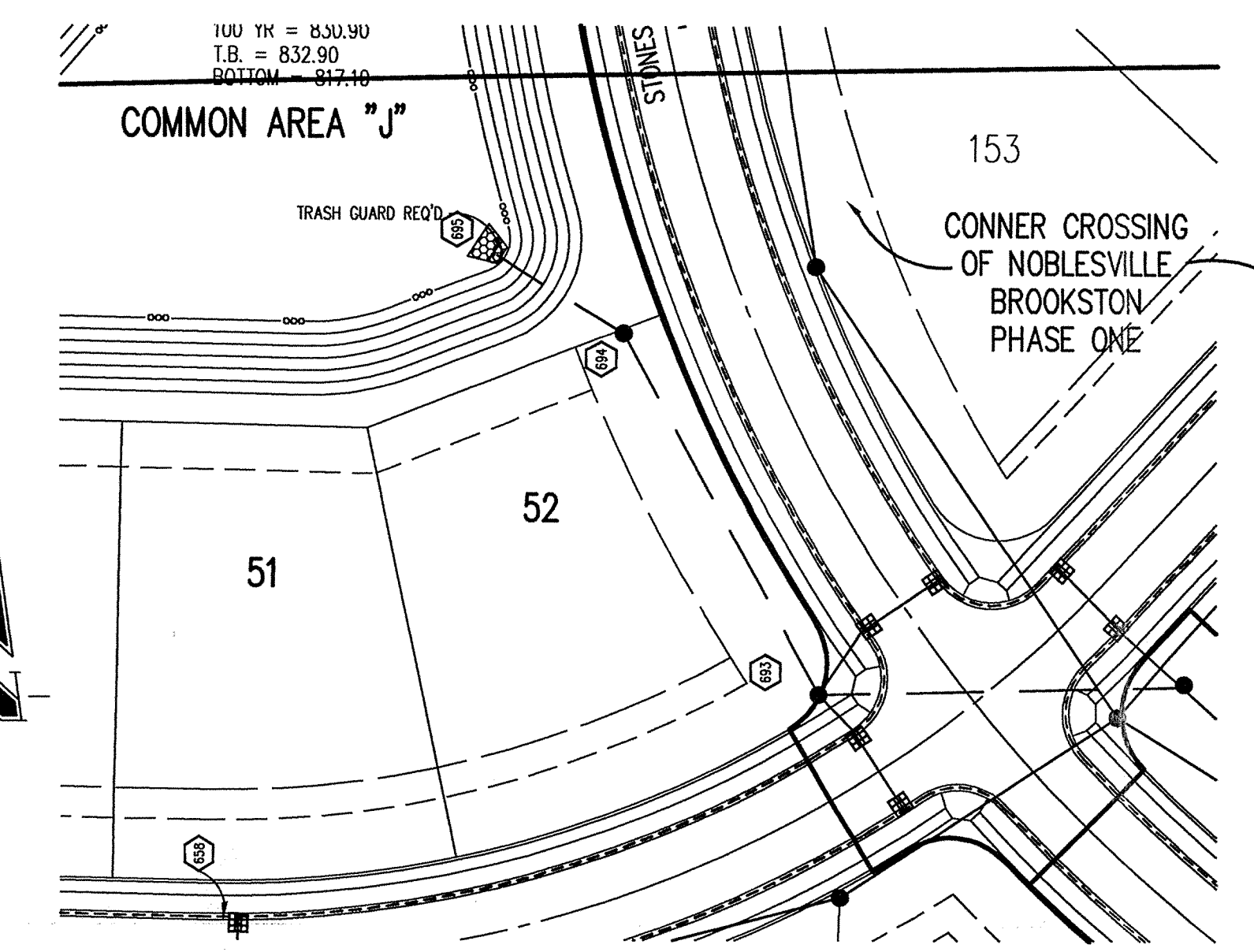
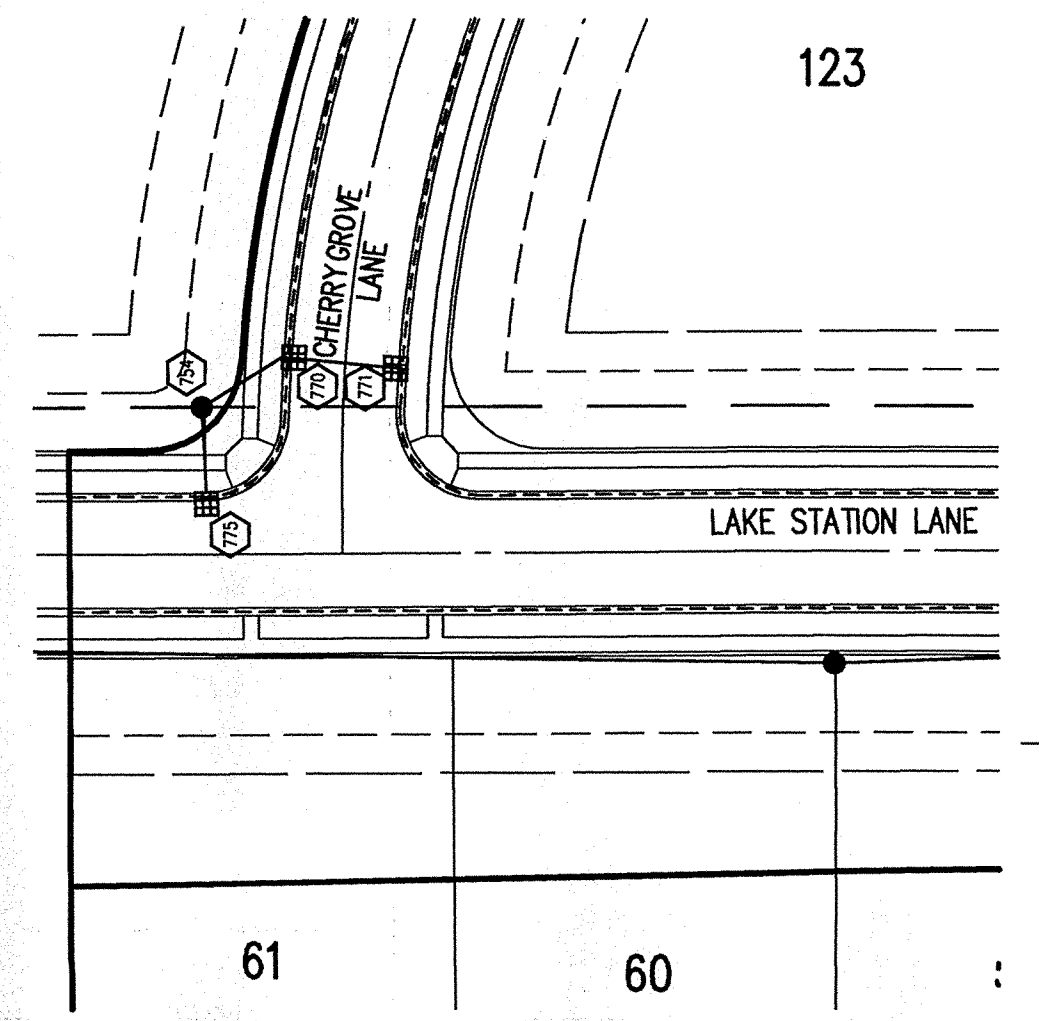
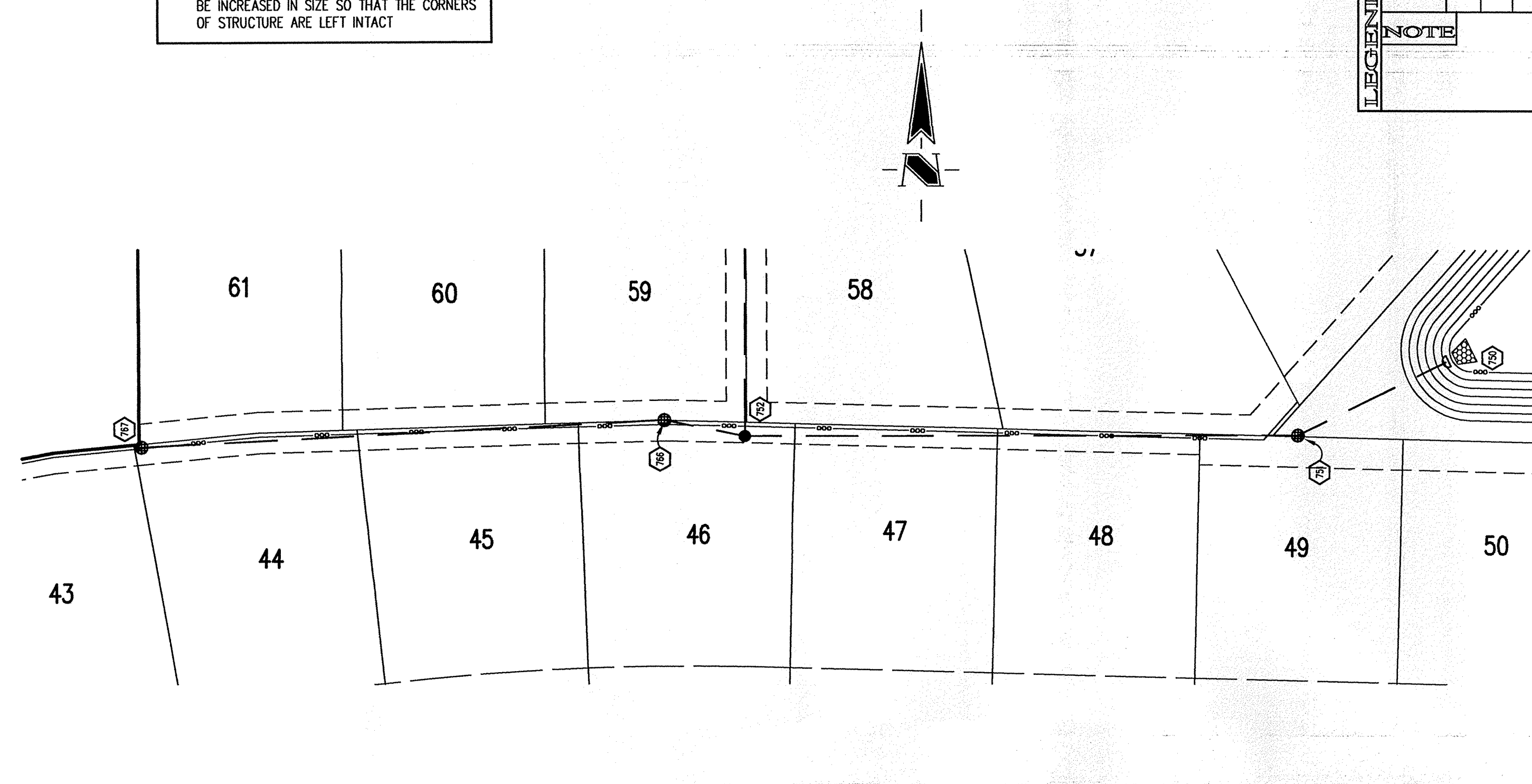
GENERAL NOTES

TEMPORARY TRAFFIC CONTROL DURING CONSTRUCTION TO CONFORM TO APPLICABLE LOCAL AND STATE STANDARDS.
ALL CONSTRUCTION ACTIVITY ON THIS SITE TO BE PERFORMED IN COMPLIANCE WITH APPLICABLE O.S.H.A. STANDARDS FOR WORKER SAFETY.
IT SHALL BE THE CONTRACTORS RESPONSIBILITY TO FIELD VERIFY ALL UTILITY LOCATIONS BEFORE CONSTRUCTION BEGINS.
CONTRACTORS SHALL MINIMIZE DAMAGE TO EXISTING TREES.

REVISIONS:
1. SET, 08/09/02, REVISED PER TAC COMMENTS.
2. SET, 09/07/02, REVISED PER TAC COMMENTS.
3. SET, 11/14/04, REVISED PER TAC COMMENTS.
4. SET, 1/16/04, REVISED PER TAC COMMENTS.

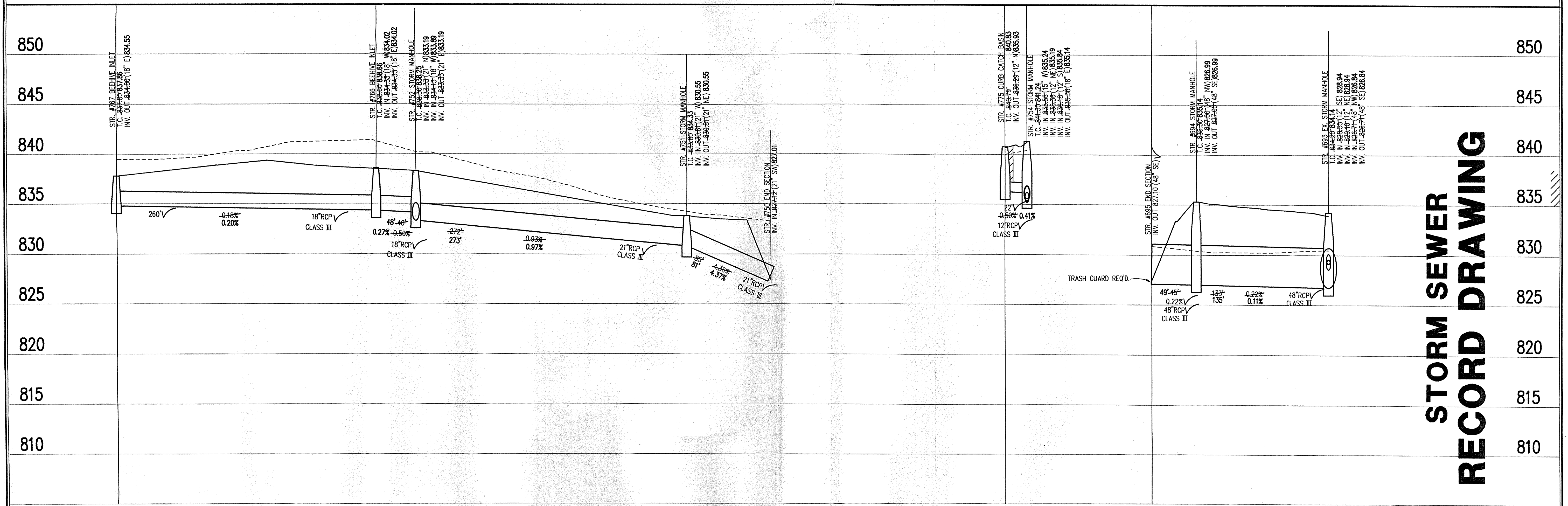
This information was prepared for the Hamilton County Geographic Information System (GIS). This document is considered an official record of the Hamilton County, Indiana.

Drawn By: *SLM*
Checked By: *SLM*



STORM SEWER PLAN

SCALE: 1"=50'



STORM SEWER RECORD DRAWING

STORM SEWER PROFILE

LEGEND

Existing Grade	New Grade	Granular Backfill

SCALE: HORIZ.: 1"=50'
VERT.: 1"=5'

BRANDON T. BURKE
REGISTERED PROFESSIONAL ENGINEER
No. 0030075
STATE OF INDIANA
DATE: _____
THIS DRAWING AND THE IDEAS, DESIGNS AND CONCEPTS CONTAINED HEREIN ARE THE EXCLUSIVE INTELLECTUAL PROPERTY OF THE SCHNEIDER CORPORATION AND ARE NOT TO BE USED OR REPRODUCED, IN WHOLE OR IN PART, WITHOUT THE WRITTEN CONSENT OF THE SCHNEIDER CORPORATION.
© COPYRIGHTED BY THE SCHNEIDER CORP. (2002)

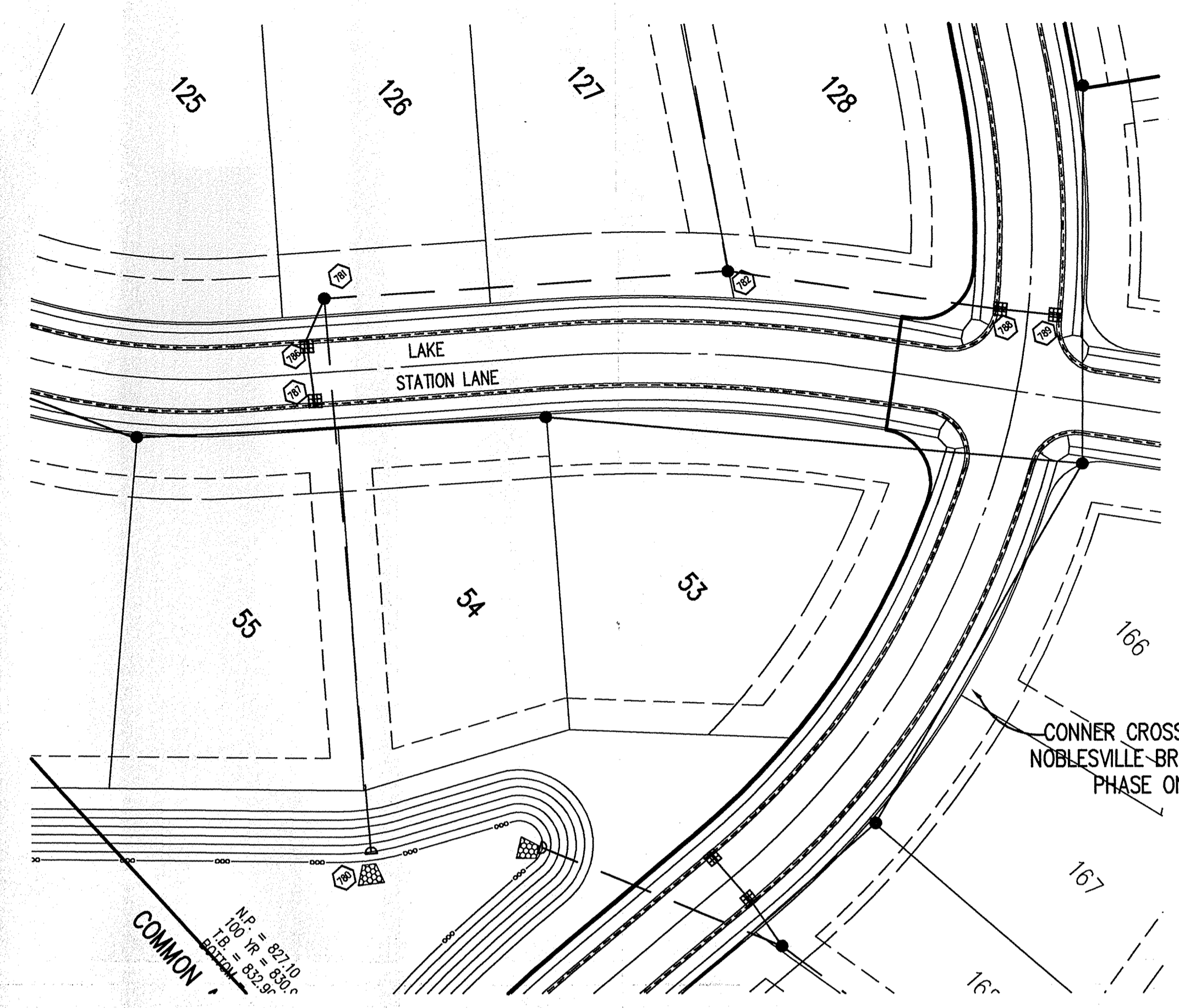
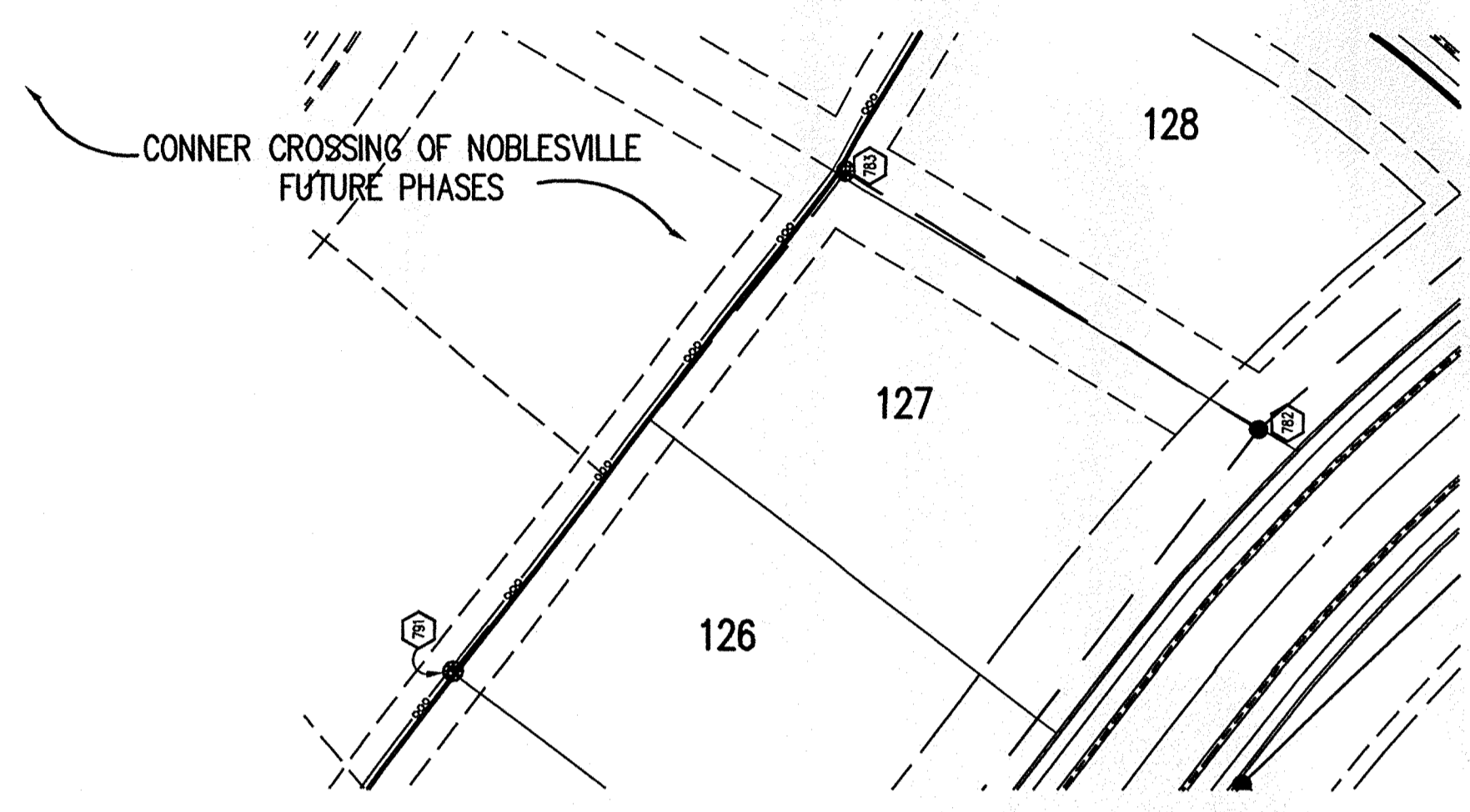
Schneider

THE SCHNEIDER CORPORATION
12821 E. New Market Street
Suite 100
Carmel, IN 46032
Telephone: 317.559.8112
Fax: 317.826.7410
www.schneidercorp.com

Architecture
Civil Engineering
Environmental Engineering
Geotechnical Services
GIS • LIS
Home Builder Services
Interior Design
Land Surveying
Landscape Architecture
Transportation Engineering

CONNER CROSSING OF NOBLESVILLE COTTAGE GROVE PHASE ONE
NOBLESVILLE, INDIANA
PRIMROSE DEVELOPMENT, L.L.C.
CARMEL, INDIANA

DATE: 6/26/02 PROJECT NO.: 3659.005
DRAWN BY: DCC CHECKED BY:
SHEET TITLE: STORM SEWER PLAN & PROFILE
DRAWING FILES:
N:\3659\005\DWG\001-606.DWG
XREF: CA-1-BS.DWG
XREF: CO-1-BS.DWG
XREF: PBN-1-BS.DWG
XREF: BRK-1-BS.DWG
XREF: 3659Q05.DWG
XREF: FUTR-BS.DWG
XREF: 005-SUM.DWG
SHEET NO.: **C605**



HOLEY MOLEY SAYS
"DON'T DIG BLIND"

"IT'S THE LAW"
 CALL 2 WORKING DAYS BEFORE YOU DIG
1-800-382-5544
 CALL TOLL FREE
 PER INDIANA STATE LAW IS-69-1991.
 IT IS AGAINST THE LAW TO EXCAVATE
 WITHOUT NOTIFYING THE UNDERGROUND
 LOCATION SERVICE TWO (2) WORKING
 DAYS BEFORE COMMENCING WORK.

GENERAL NOTES

1. TEMPORARY TRAFFIC CONTROL DURING CONSTRUCTION TO CONFORM TO APPLICABLE LOCAL AND STATE STANDARDS.
2. ALL CONSTRUCTION ACTIVITY ON THIS SITE TO BE PERFORMED IN COMPLIANCE WITH APPLICABLE O.S.H.A. STANDARDS FOR WORKER SAFETY.
3. IT SHALL BE THE CONTRACTORS RESPONSIBILITY TO FIELD VERIFY ALL UTILITY LOCATIONS BEFORE CONSTRUCTION BEGINS.
4. CONTRACTORS SHALL MINIMIZE DAMAGE TO EXISTING TREES.

LEGEND/DETAILS

Sheet	Detail	Description
CB04		Bedding Detail - Reinforced Concrete Pipe (RCP)
CB05		Roll Curb Inlet Detail
CB05		Beehive Inlet Detail
CB05		Storm Manhole Detail
CB05		Precast Concrete End Section
CB12		RipRap Detail @ End Section

NOTE

BENCHMARK

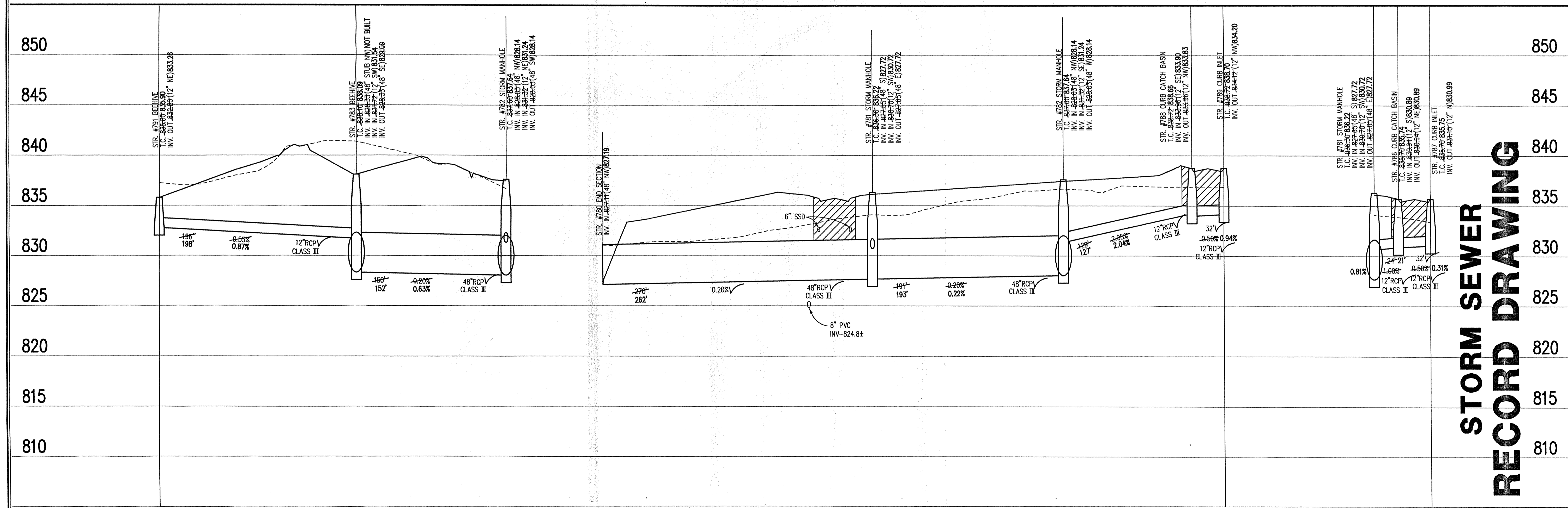
BM #1 - In Hamilton County, about 1.4 miles south of Westfield, 1.4 miles south along "old" U.S. Highway 31 from its intersection with State Road 32 in Westfield to an east-west cross road, at a 1.5 foot pipe culvert under the road, in the northeast quarter of the intersection, set in the top of the east concrete headwall of the culvert, 23 feet north of the center line of the east-west road, 15 feet east of the center line of the north-south road, 601 feet north of the south face of the headwall, a chiseled triangle Elevation = 845.033 (NGVD 1929)

BM #2 - In Hamilton County, about 1.4 miles south of Westfield, 1.4 miles south along "old" U.S. Highway 31 from its intersection with State Road 32 in Westfield to an east-west cross road, thence 0.1 mile east to a concrete bridge over Cool Creek, set in the top of the west end of the north girder of the bridge, 11 feet north of the center line of the road, 2.9 feet above the roadway, 1.4 feet east of the west face of the north girder, a Standard Indiana Flood Control and Water Resources Commission bronze benchmark tablet, stamped "HAM 18 1959" (Note: bronze disk gone) Elevation = 846.716

NOTE:
 ANY TYPE "A" STORM STRUCTURE IN WHICH INCOMING OR OUTGOING PIPES ARE NOT PERPENDICULAR TO THE STRUCTURE SHALL BE INCREASED IN SIZE SO THAT THE CORNERS OF STRUCTURE ARE LEFT INTACT

STORM SEWER PLAN

SCALE: 1"=50'



STORM SEWER RECORD DRAWING

STORM SEWER PROFILE

LEGEND

	Existing Grade
	New Grade
	Granular Backfill

SCALE: **HORZ.: 1"=50'**
VERT.: 1"=5'

REVISIONS:
 01/07/02 REVISED PER TAC COMMENTS.
 02/07/02 REVISED PER CITY OF NOBLESVILLE COMMENTS.
 03/07/02 REVISED PER CITY OF NOBLESVILLE COMMENTS.
 04/07/02 REVISED PER CITY OF NOBLESVILLE COMMENTS.

This information was gathered from the files of the City of Noblesville, Indiana. It is not to be used or reproduced, in whole or in part, without the written consent of the Schneider Corporation.

Drawn By: SLM
 Checked By: SLM
 Date: 4-27-04

BRANDON T. BURKE
 REGISTERED
 No. 0000075
 STATE OF INDIANA
 PROFESSIONAL ENGINEER

Brandon T. Burke

DATE: _____

THIS DRAWING AND THE IDEAS, DESIGNS AND CONCEPTS CONTAINED HEREIN ARE THE EXCLUSIVE INTELLECTUAL PROPERTY OF THE SCHNEIDER CORPORATION AND ARE NOT TO BE USED OR REPRODUCED, IN WHOLE OR IN PART, WITHOUT THE WRITTEN CONSENT OF THE SCHNEIDER CORPORATION.

© COPYRIGHTED BY THE SCHNEIDER CORP. (2002)

Schneider

THE SCHNEIDER CORPORATION
 12821 E. New Market Street
 Suite 100
 Carmel, IN 46032
 Telephone: 7569.8112
 Fax: 317.826.8410
 www.schneidercorp.com

Architecture
 Civil Engineering
 Environmental Engineering
 Geotechnical Services
 GIS • LIS
 Home Builder Services
 Interior Design
 Land Surveying
 Landscape Architecture
 Transportation Engineering

**CONNER CROSSING OF NOBLESVILLE
 COTTAGE GROVE PHASE ONE**

NOBLESVILLE, INDIANA

PRIMROSE DEVELOPMENT, L.L.C.
 CARMEL, INDIANA

DATE: 6/26/02 PROJECT NO: 3659.005
 DRAWN BY: DCC CHECKED BY:
 SHEET TITLE: STORM SEWER PLAN - PROFILE
 DRAWING FILES:
 N:\3659\005\DWG\C601-606.DWG
 XREF: CA-1-BS.DWG
 XREF: CST-1-BS.DWG
 XREF: PEN-1-BS.DWG
 XREF: BRK-1-BS.DWG
 XREF: 3659005.DWG
 XREF: FUTR-BS.DWG
 XREF: OOS-STW.DWG
 SHEET NO:

C606

copy is from the Digital Archive of the Hamilton County Surveyor's Office; Noblesville, In 46060